



Parts Manual

Mfg. No: 2691816-00
ZT2552, 52" Fabricated Mower Deck,
25HP B&S, 360Z Series

1696384YP - Grass Mulcher Kit, 52" Fabricated Mower Deck.

1697404-00 - 52" Turbo Collection System.

1697378A-00 - Kit, ZT Catcher, Twin, CS.

1697378A-00 - Kit, ZT Catcher, Twin, CS.

Not For
Reproduction

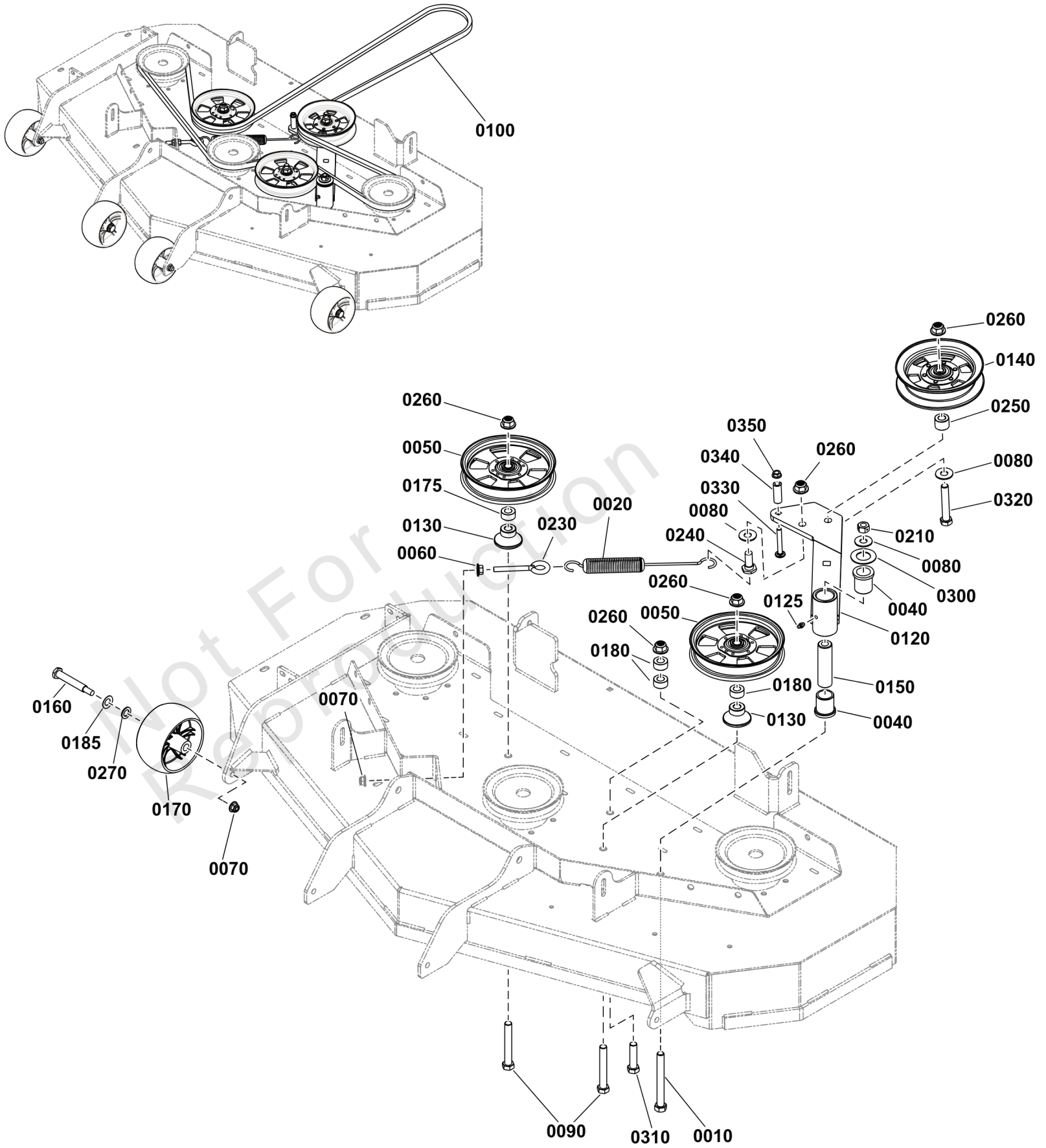
| Model Components | Page |
|--|-------------|
| 52" Mower Deck - Clutch & Support Group..... | 4 |
| 52" Mower Deck - Housing, Arbors & Blade Group..... | 6 |
| Body & Fuel Tank Group..... | 8 |
| Controls Group..... | 10 |
| Decals Group - Brand & Model..... | 12 |
| Decals Group - Safety & Operation..... | 14 |
| Electrical Group..... | 16 |
| Electrical Schematic - Charging Circuit - B&S 44C777 & 44T977..... | 18 |
| Electrical Schematic - Cranking Circuit - B&S 44C777 & 44T977..... | 20 |
| Electrical Schematic - Ignition Grounding Circuit/Op. Pres. - B&S 44C777 & 44T977..... | 22 |
| Electrical Schematic - PTO Clutch Circuit - B&S 44C777 & 44T977..... | 24 |
| Engine Group..... | 26 |
| EVAP Group..... | 28 |
| Frame Group..... | 30 |
| Lift Group..... | 32 |
| Parking Brake Group..... | 34 |
| Seat Group..... | 36 |
| Transmission Group..... | 38 |
| Wheel & Tire Group..... | 40 |
| Torque Specification Chart..... | 42 |

Not For
Reproduction

52" Mower Deck - Clutch & Support Group

Note: Unless noted otherwise, use the standard torque specifications

Mfg. No: 2691816-00



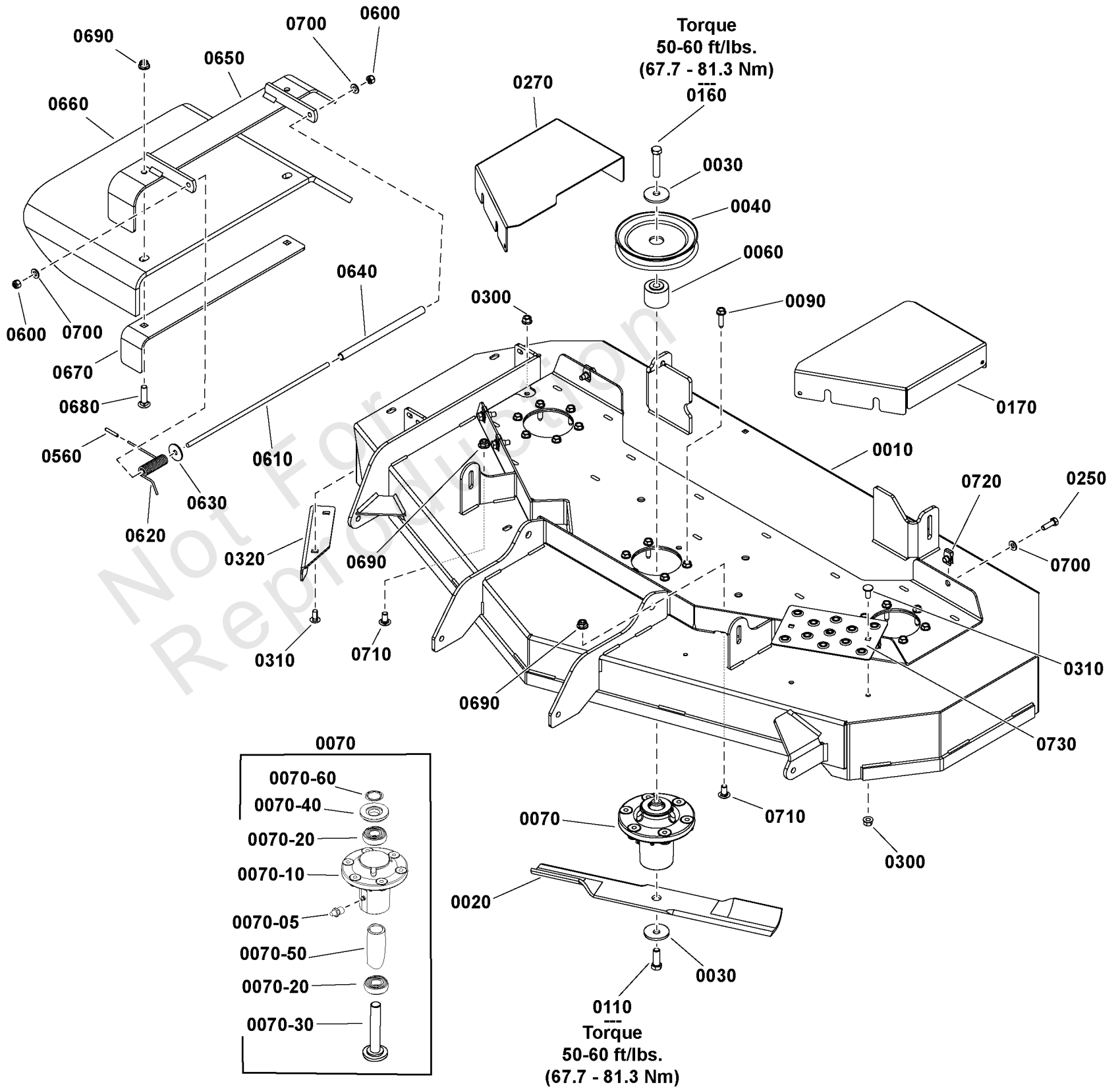
52" Mower Deck - Clutch & Support Group

| REF NO | PART NO | QTY | DESCRIPTION |
|--------|--------------|-----|--------------------------|
| 0010 | 5025017X36SM | 1 | BOLT, 1/2-13 X 4-1/2" |
| 0020 | 5023340SM | 1 | SPRING, EXTENSION, SW |
| 0040 | 5021541SM | 2 | BUSHING, FLANGE |
| 0050 | 5104717YP | 2 | PULLEY |
| 0060 | 5025128SM | 1 | NUT, 3/8-16 HEX SERRA |
| 0070 | 5025394SM | 5 | NUT, 3/8-16 HEX NYLOCK |
| 0080 | 703451 | 3 | WASHER, FLAT |
| 0090 | 5025017X28SM | 2 | BOLT, 1/2-13 X 3-1/2" |
| 0100 | 84006540 | 1 | BELT |
| 0120 | 84007070 | 1 | WELDMENT, Idler Arm, 52" |
| 0125 | 5020095SM | 1 | GREASE FITTING, 1/4-2 |
| 0130 | 5103430YP | 2 | IDLER MNT |
| 0140 | 5104716YP | 1 | PULLEY, IDLER |
| 0150 | 5045022SM | 1 | SPACER, .52 X 1.00 X |
| 0160 | 1736539YP | 4 | BOLT, SHOULDER |
| 0170 | 1736896YP | 4 | WHEEL, GAUGE |
| 0175 | 5101162YP | 1 | SPACER |
| 0180 | 84007079 | 3 | SPACER |
| 0185 | 0020X3MA | 4 | WASHER,SPRING .52X.99 |
| 0210 | 5025332SM | 1 | NUT - SIDE LOCK |
| 0230 | 5025429SM | 1 | EYEBOLT - 3/8-16 |
| 0240 | 1737409YP | 1 | BOLT, SHOULDER, .255 |
| 0250 | 5045178SM | 1 | SPACER, .52 X 1.00 X |
| 0260 | 5025396SM | 5 | NUT, Hex Flange, 1/2-13 |
| 0270 | 703128 | 4 | WASHER |
| 0300 | 703199 | 1 | WASHER, 1 |
| 0310 | 5025017X16YP | 1 | BOLT, 1/2-13 X 2 GD5 |
| 0320 | 5025017X24SM | 1 | BOLT, 1/2-13 X 3" GD5 |
| 0330 | 704421 | 1 | SCREW, 5/16 X 2.25 |
| 0340 | 1713588SM | 1 | SPACER-0.323IDX0.555O |
| 0350 | 704067 | 1 | NUT, HEX FLNG,5/16-18 |

52" Mower Deck - Housing, Arbors & Blade Group

Note: Unless noted otherwise, use the standard torque specifications

Mfg. No: 2691816-00



52" Mower Deck - Housing, Arbors & Blade Group

| REF NO | PART NO | QTY | DESCRIPTION |
|---------|--------------|-----|---------------------------------------|
| 0010 | 84006943 | 1 | HOUSING, Mower Deck w/Decals, 52" FAB |
| 0020 | 1756152AYP | 3 | BLADE, MOWER, 18IN |
| 0030 | 1656916SM | 6 | WASHER, SPRING 0.475I |
| 0040 | 84006898 | 3 | PULLEY |
| 0060 | 1759940YP | 3 | SPACER |
| 0070 | 84003174 | 3 | ARBOR ASSEMBLY |
| 0070-05 | 1704314SM | 1 | LUBE FITTING, .250 DR |
| 0070-10 | 84003653 | 1 | HOUSING ASSEMBLY |
| 0070-20 | 1735399YP | 2 | BEARING, Ball, 20mm |
| 0070-30 | 84003655 | 1 | SHAFT, Mower Spindle |
| 0070-40 | 84003166 | 1 | COVER, ARBOR |
| 0070-50 | 84003167 | 1 | SPACER, BEARING |
| 0070-60 | 1960766YP | 1 | RING, SELF LOCKING |
| 0090 | 703167 | 18 | SCREW |
| 0110 | 703579 | 3 | HHCS, 7/16-14X1.25 |
| 0160 | 84007038 | 3 | CAPSCREW, Hex Head, 7/16-14 X 2 |
| 0170 | 84007039 | 1 | COVER, ARBOR |
| 0250 | 5025011X8SM | 6 | CAPSCREW, Hex Head, 5/16-18 X 1 |
| 0270 | 84006931 | 1 | COVER, ARBOR |
| 0300 | 5025392SM | 4 | NUT, Ny Lock Flange, 5/16-18 |
| 0310 | 5025145X6SM | 4 | BOLT, 5/16-18 X 3/4", |
| 0320 | 5405557YP | 1 | PLATE |
| 0560 | 5023489SM | 1 | CAP, PROTECTOR, .120 |
| 0600 | 5025045SM | 2 | NUT, 5/16-24 HEX NYLO |
| 0610 | 5042555SM | 1 | ROD, BRAKE LINKAGE |
| 0620 | 5023385SM | 1 | SPRING, TORSION |
| 0630 | 5025164SM | 1 | WASHER, 5/16" FENDER |
| 0640 | 5050086X8SM | 1 | TORSION SPRING SPACER |
| 0650 | 5413404AYP | 1 | MOUNT, Discharge |
| 0660 | 5413498YP | 1 | CHUTE, Discharge |
| 0670 | 5413401AYP | 1 | SUPPORT |
| 0680 | 5025146X12YP | 2 | BOLT, 3/8-16 X 1-1/2 |
| 0690 | 5025394SM | 4 | NUT, 3/8-16 HEX NYLOCK |
| 0700 | 5025155SM | 8 | WASHER, 5/16 |
| 0710 | 703448 | 2 | BOLT, 3/8-16X.75 G5 |
| 0720 | 5022308SM | 6 | BODY CLIP, 5/16-18 X |
| 0730 | 84006929 | 1 | PLATE, BASE |

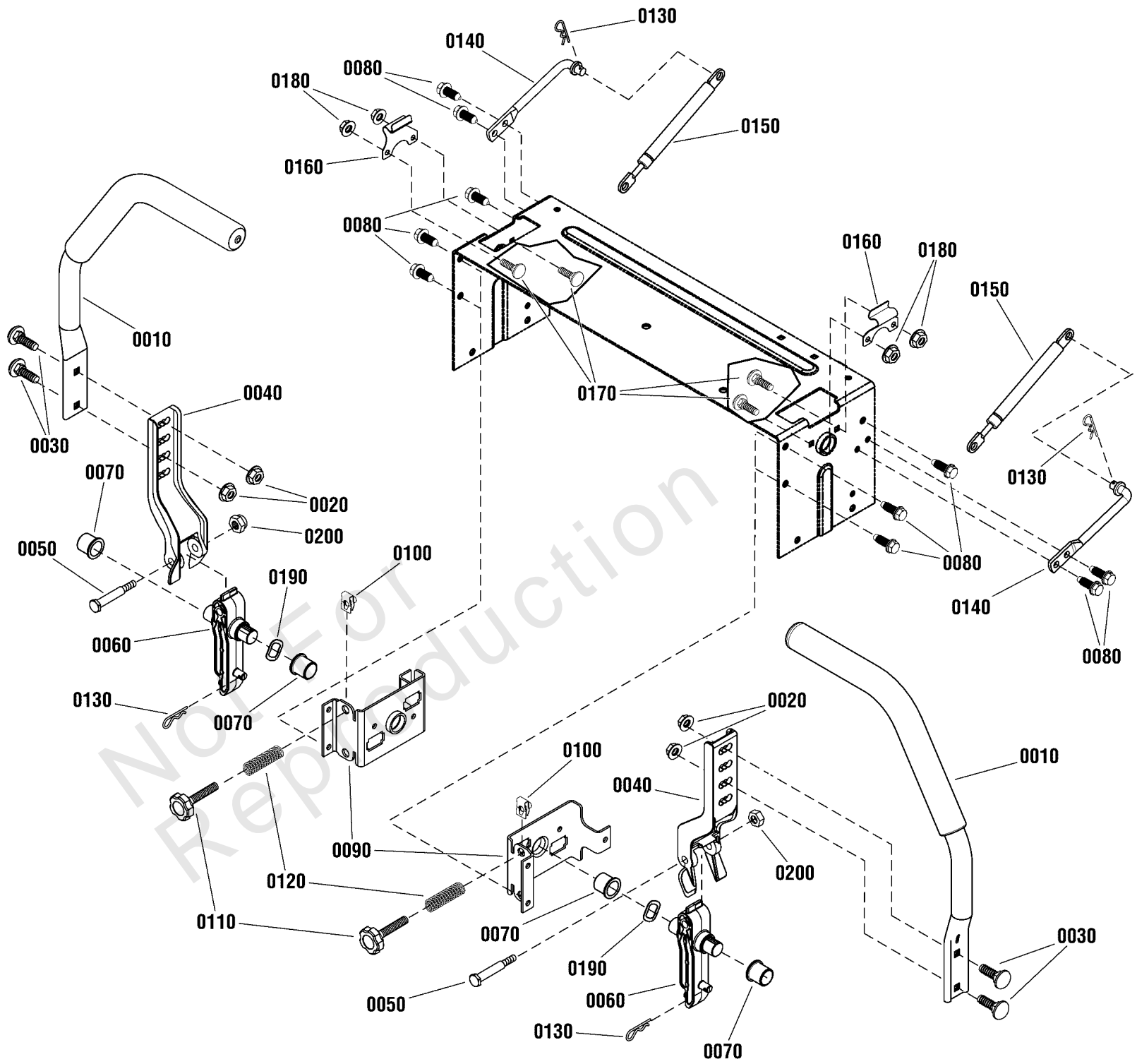
Body & Fuel Tank Group

| REF NO | PART NO | QTY | DESCRIPTION |
|---------|------------|-----|--|
| 0010 | 84008779 | 1 | FENDER, Right |
| 0020 | 1759369YP | 1 | ROD, Support |
| 0030 | 703953 | 1 | SCREW, 1/4-20X5/8 |
| 0040 | 1758202YP | 1 | FUEL TANK ASSEMBLY, No Fuel Gauge -(Includes item Nos. 0040-10 thru 0040-70) |
| 0040-10 | ----- | 1 | TANK, Fuel -(Order item 0040) |
| 0040-20 | ----- | 1 | NECK, Fuel Filter -(Order item 0040) |
| 0040-30 | 1758314YP | 1 | CAP-FUEL TANK |
| 0040-40 | 799624 | 1 | GROMMET |
| 0040-50 | 770046 | 1 | VENT, Remote |
| 0040-60 | 1758927YP | 1 | TUBE-PICK UP |
| 0040-70 | 1726400SM | 1 | BUSHING |
| 0045 | 1758919YP | 1 | FUEL TANK ASSEMBLY. W / Fuel Gauge -(Includes item Nos. 0045-10 thru 0045-90) |
| 0045-10 | ----- | 1 | TANK, Fuel -(Order item 0045) |
| 0045-20 | ----- | 1 | NECK, Fuel Filter -(Order item 0045) |
| 0045-30 | 1758314YP | 1 | CAP-FUEL TANK |
| 0045-40 | 799624 | 1 | GROMMET |
| 0045-50 | 770046 | 1 | VENT, Remote |
| 0045-60 | 1758927YP | 1 | TUBE-PICK UP |
| 0045-70 | 1726400SM | 1 | BUSHING |
| 0045-80 | 1758928YP | 1 | GAUGE-FUEL |
| 0045-90 | 84004692 | 1 | GROMMET |
| 0050 | 197546GS | 5 | MOUNT-VIBRATION |
| 0060 | 1758076YP | 1 | FENDER-LEFT |
| 0070 | 1758239AYP | 2 | SUPPORT-FENDER |
| 0080 | 84002196 | 1 | BRACKET |
| 0090 | 703228 | 18 | SCREW, 5/16-18 X .75 |
| 0100 | 5025394SM | 2 | NUT, 3/8-16 HEX NYLOCK |
| 0110 | 704038 | 2 | SCREW |
| 0120 | 1960044SM | 4 | WASHER-0.312(0.33IDX1 |
| 0130 | 1759140AYP | 1 | STRAP-FUEL TANK |
| 0140 | 1760244YP | 2 | SUPPORT, Fuel Tank |
| 0150 | 703054 | 2 | SCREW, 1/4-20X0.625 |

Controls Group

Note: Unless noted otherwise, use the standard torque specifications

Mfg. No: 2691816-00



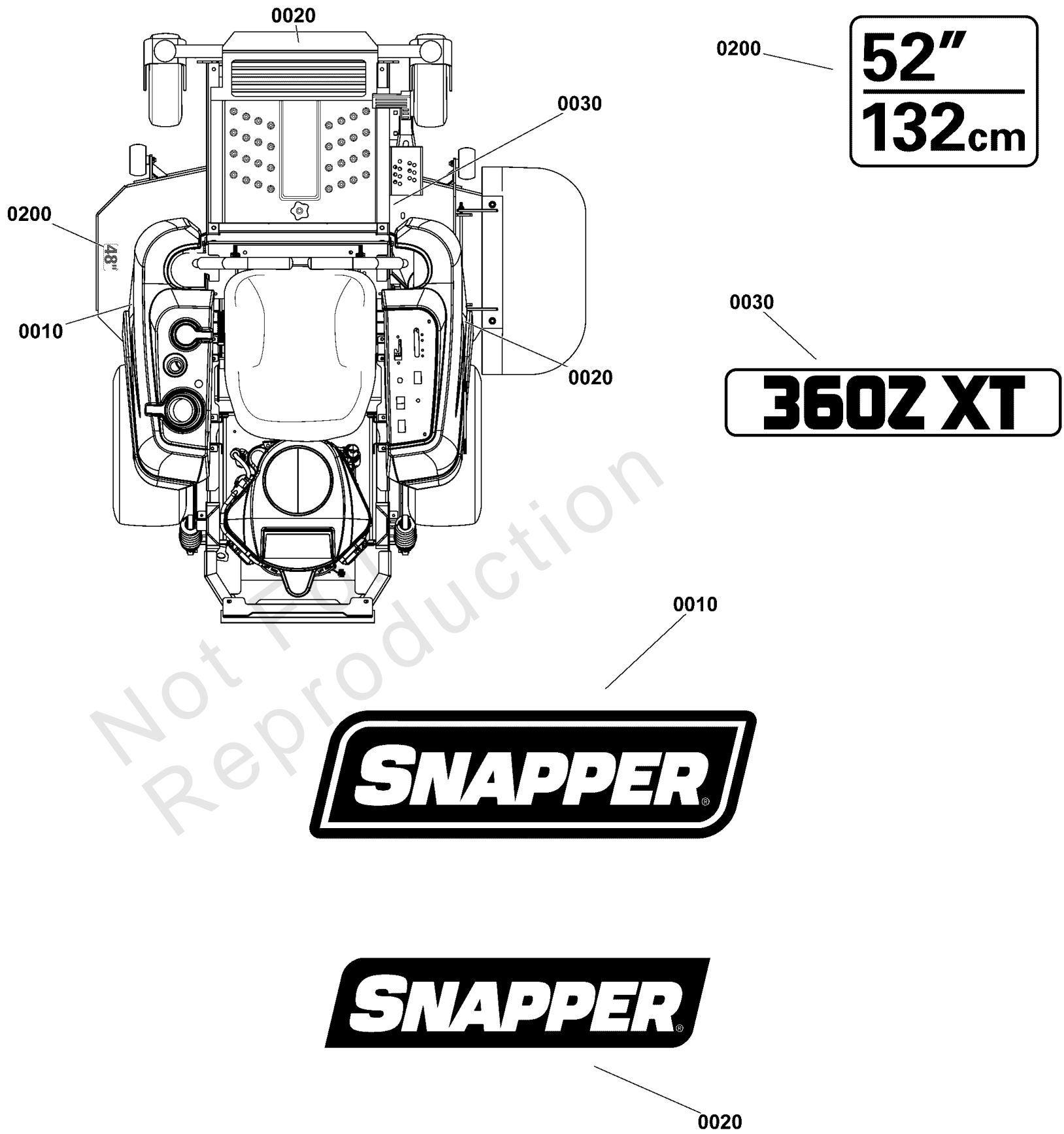
Controls Group

| REF NO | PART NO | QTY | DESCRIPTION |
|--------|------------|-----|-----------------------|
| 0010 | 1758372YP | 2 | HANDLE, CONTROL |
| 0020 | 703115 | 4 | NUT |
| 0030 | 703483 | 4 | BOLT,5/16-18X1.000,RO |
| 0040 | 1757965YP | 2 | ARM, UPPER CONTROL |
| 0050 | 707624 | 2 | BOLT,SHLDR,5/16-18 |
| 0060 | 1757964YP | 2 | ARM, LOWER CONTROL |
| 0070 | 2176440SM | 4 | BUSHING-0.765IDX |
| 0080 | 703949 | 10 | SCREW, 5/16-18.625 |
| 0090 | 1758087AYP | 2 | PIVOT, Inner Control |
| 0100 | 5022308SM | 2 | BODY CLIP, 5/16-18 X |
| 0110 | 1758373YP | 2 | KNOB, 5/16-18 X 2.5 |
| 0120 | 1650347SM | 2 | SPRING-COMP 0.50 IDX |
| 0130 | 5025211SM | 4 | PIN, HAIR, .0585" X 1 |
| 0140 | 1758463YP | 2 | ROD, DAMPNER MNT |
| 0150 | 84001625 | 2 | DAMPENER |
| 0160 | 1759182YP | 2 | LATCH, CONTROL ARM |
| 0170 | 703101 | 4 | BOLT,1/4-20X.75 |
| 0180 | 703463 | 4 | NUT, GR5,1/4-20 |
| 0190 | 707625 | 2 | WSHR, 3 WAVE, .750 |
| 0200 | 703902 | 2 | NUT, HEX, 5/16-18 |

Decals Group - Brand & Model

Note: Unless noted otherwise, use the standard torque specifications

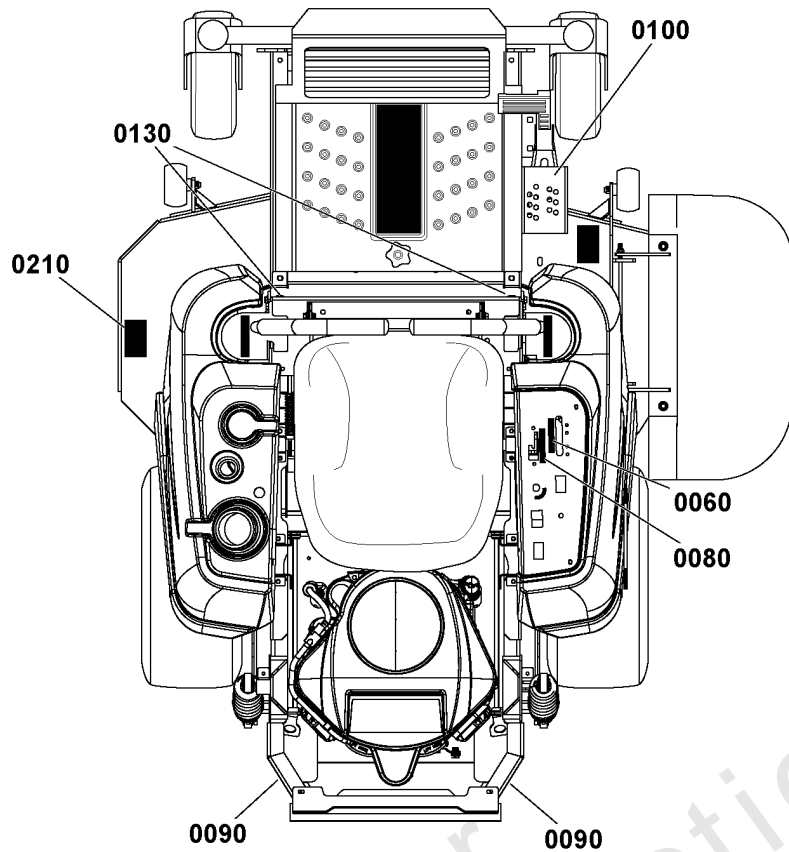
Mfg. No: 2691816-00



Decals Group - Brand & Model

| REF NO | PART NO | QTY | DESCRIPTION |
|---------------|----------------|------------|----------------------|
| 0010 | 1760170YP | 2 | DECAL, Logo, Snapper |
| 0020 | 1750913YP | 2 | DECAL, SNAPPER LOGO |
| 0030 | 84006941 | 1 | DECAL, 360Z XT |
| 0200 | 1755721YP | 1 | DECAL, 52"/132cm |

Not For Reproduction



0070

⚠ DANGER

Amputation hazard
Rotating blades cut off arms and legs.

- Stop the mower when children or others are near.
- Do not carry riders (especially children) even with the blades off. They may fall off or return for another ride when you are not expecting it.
- Look down, behind and to the side before changing directions.

Loss of control and roll-over hazard
Operating on slopes can be hazardous and cause loss of control and roll-overs.

- Do not operate on slopes over 10 degrees.
- Avoid sudden turns or rapid speed changes.
- Reduce speed and use extreme caution on slopes.
- Avoid turning down slopes; if possible turn up slopes.
- If machine stops forward motion on a slope, stop the blades and drive slowly off the slope.

Water, retaining walls and drop-off hazards
Wheels dropping over edges may result in serious injury, death or drowning.

- Do NOT operate down slope towards or near water, retaining walls or drop-offs.
- Give yourself a minimum of two mower widths of clearance around these hazards.

⚠ WARNING

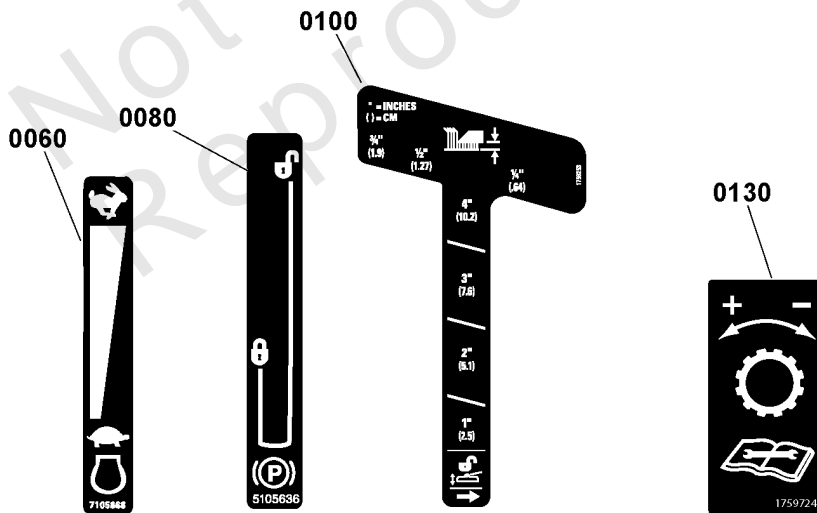
Fire hazard
Gasoline is flammable. Yard debris is combustible.

- Allow engine to cool for at least 3 minutes before refueling.
- Keep unit cleaned of debris.
- This equipment may create sparks that can start fires around dry vegetation. A spark arrester may be required. Contact local fire agencies for regulations relating to fire prevention requirements.

Avoid serious injury or death
Read the operator's manual before using this product.

- Do NOT operate this machine unless you are trained.
- Know the location and function of all controls.
- Keep safety devices (guards, shields, switches, etc.) in place and working.
- Remove objects that could be thrown by the blade.
- Be sure blade(s) and engine are stopped before placing hands or feet near blade(s).
- When leaving machine, shut off, remove key, and set parking brake.

5108564-A
CAN/CSB-ZWIMF-2



0210

⚠ DANGER

Amputation and thrown objects hazard

- Keep hands and feet away from deck.
- Do not operate mower unless discharge chute or entire grass catcher is in its proper place.

7101688

0145

HYDRAULIC OIL

USE SAE 20W-50 MOTOR OIL

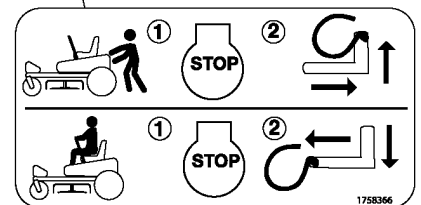
5100857

0140

| Belts & Blades | |
|--------------------------------|------------|
| Transmission Drive Belt | |
| Rear - Fixed Frame | 84006539 |
| Rear - Suspension | 885714YP |
| 52" Mower | |
| Deck Drive Belt | 84006540 |
| Mower Blade | 1756152AYP |
| 61" Mower | |
| Deck Drive Belt | 84006541 |
| Mower Blade | 5104045YP |

80067000

0090



Decals Group - Safety & Operation

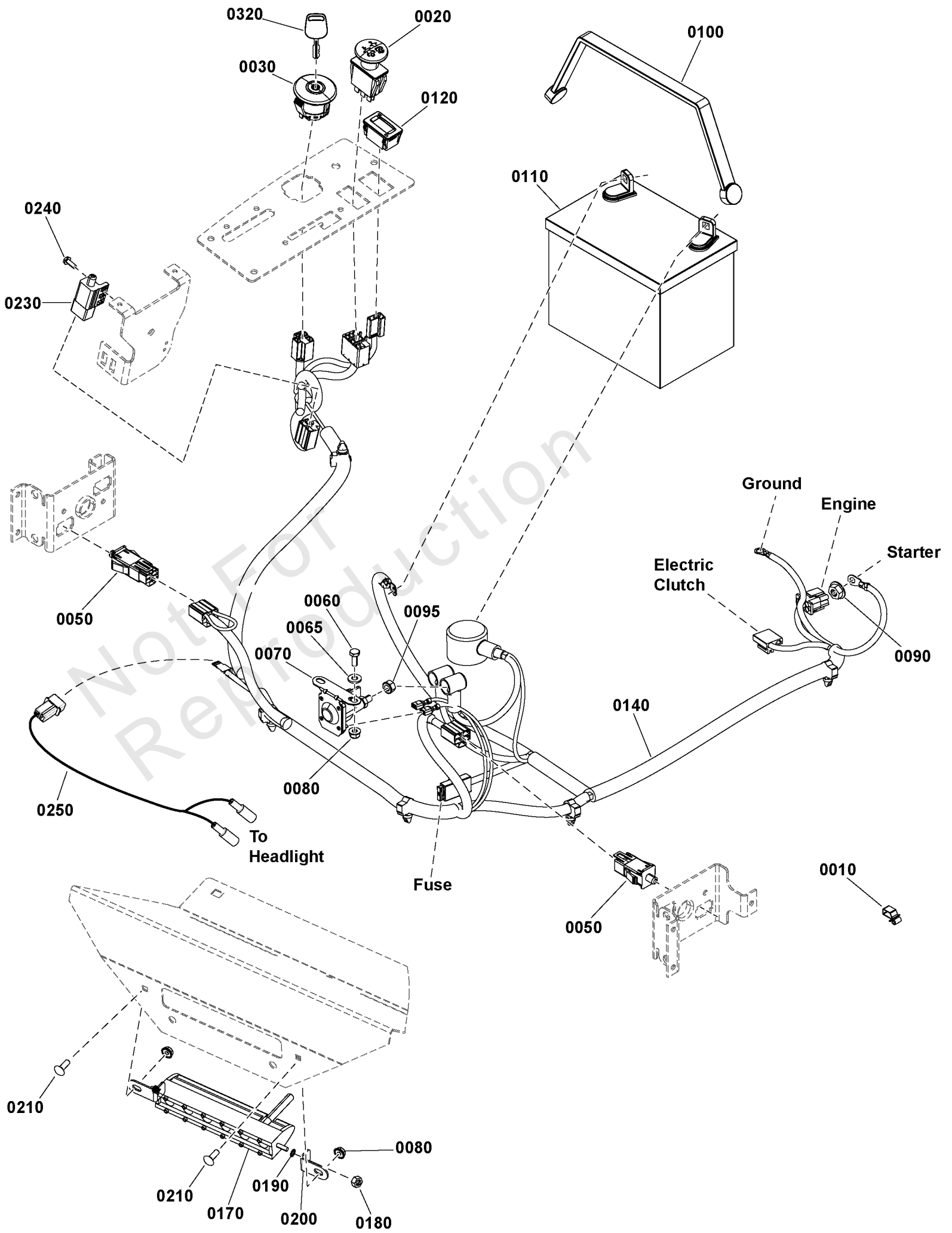
| REF NO | PART NO | QTY | DESCRIPTION |
|---------------|----------------|------------|---------------------------------|
| 0060 | 7105868YP | 1 | DECAL, ENGINE SPEED |
| 0070 | 84003344 | 1 | DECAL, MAIN, SAFETY |
| 0080 | 84007063 | 1 | DECAL, Parking Brake |
| 0090 | 1758366YP | 2 | DECAL, Tow Release |
| 0100 | 84007064 | 1 | DECAL, Height of Cut |
| 0130 | 1759724YP | 2 | DECAL, Tracking Adjustment - ZT |
| 0140 | 84006942 | 1 | DECAL, Service Parts |
| 0145 | 84002270 | 1 | DECAL, Oil |
| 0210 | 7101665YP | 2 | DECAL, DANGER |

Not For Reproduction

Electrical Group

Note: Unless noted otherwise, use the standard torque specifications

Mfg. No: 2691816-00



Electrical Group

| REF NO | PART NO | QTY | DESCRIPTION |
|--------|-----------|-----|--|
| 0010 | 2172434SM | 3 | CLIP- WIRE DIA .390 |
| 0020 | 1722887SM | 1 | SWITCH-PTO PUSH |
| 0030 | 7106169YP | 1 | SWITCH, IGNITION, DEL |
| 0050 | 7022886YP | 2 | SWITCH, DP NO/NC SNAP |
| 0060 | 703338 | 2 | BOLT,1/4-20X5/8 |
| 0065 | 84007033 | 2 | WASHER |
| 0070 | 772333 | 1 | SOLENOID, Starter |
| 0080 | 5025391 | 4 | NUT, 1/4-20 Hex Nylock Flange |
| 0090 | 703061 | 1 | NUT, HEX KEPS, 1/4-20 |
| 0095 | 2860750SM | 2 | NUT-HEX KEPS 5/16-24 |
| 0100 | 1722009SM | 1 | STRAP, Rubber, 13" |
| 0110 | ----- | 1 | BATTERY, 12 VOLT, 230 CCA |
| 0120 | 1731185SM | 1 | METER-HOUR DIGITAL NO |
| 0140 | 84006894 | 1 | HARNESS, WIRING |
| 0170 | 84006903 | 1 | HEADLIGHT ASSEMBLY |
| 0180 | 84007034 | 2 | NUT, Hex, M5X.8MM, Nylon Insert |
| 0190 | 84007035 | 2 | WASHER, 5MM, Star |
| 0200 | 84007036 | 2 | BRACKET, L Headlight Mount |
| 0210 | 703575 | 2 | BOLT, 1/4-20X.750, SQ |
| 0230 | 1717050SM | 1 | SWITCH-PUSH BUTT |
| 0240 | 704060 | 2 | SCREW,HEX, #10-24X.5 |
| 0250 | 84006895 | 1 | HARNESS, Headlight Jumper |
| 0320 | 7106170YP | 1 | KEY, Ignition Switch, Pack of 2, NA/AU |

Electrical Schematic - Charging Circuit - B&S 44C777 & 44T977

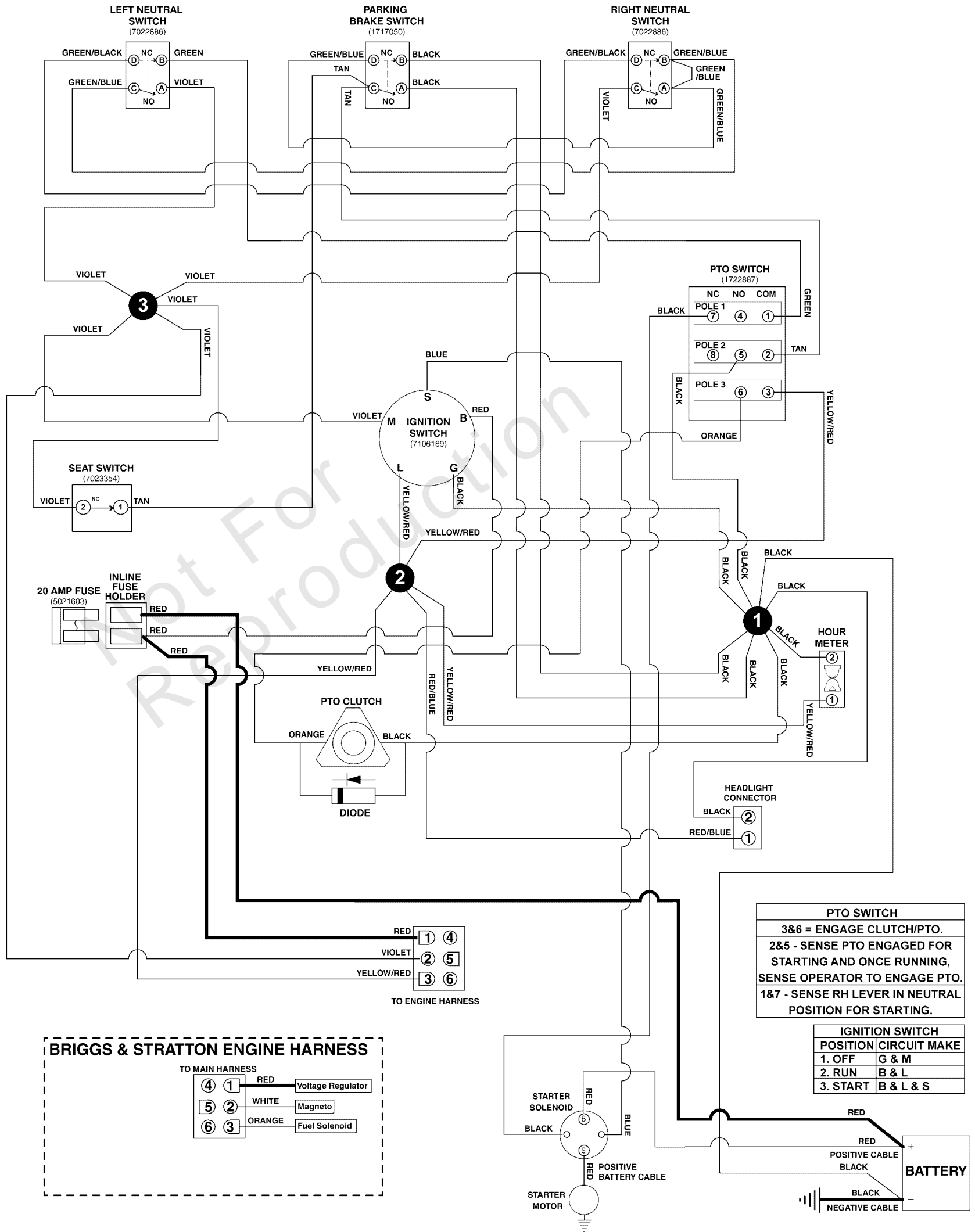
Note: Unless noted otherwise, use the standard torque specifications

Mfg. No: 2691816-00

80097605 MAIN WIRE HARNESS - BRIGGS & STRATTON 44C777 & 44T977 ENGINES

80097605A

(If internal schematic of the switch is not shown, the image of the switch represents the back view of the connector as it is connected to the switch.)



Electrical Schematic - Charging Circuit - B&S 44C777 & 44T977

| REF NO | PART NO | QTY | DESCRIPTION |
|----------|-----------|-----|-----------------------|
| 80097605 | 84006894 | 1 | HARNESS, WIRING |
| 7022886 | 7022886YP | 2 | SWITCH, DP NO/NC SNAP |
| 1717050 | 1717050SM | 1 | SWITCH-PUSH BUTT |
| 1722887 | 1722887SM | 1 | SWITCH-PTO PUSH |
| 7106169 | 7106169YP | 1 | SWITCH, IGNITION, DEL |
| 7023354 | 7023354YP | 1 | SWITCH, SEAT |
| 5021603 | 5021603SM | 1 | FUSE, ATO, 20 AMP |

Not For Reproduction

Electrical Schematic - Cranking Circuit - B&S 44C777 & 44T977

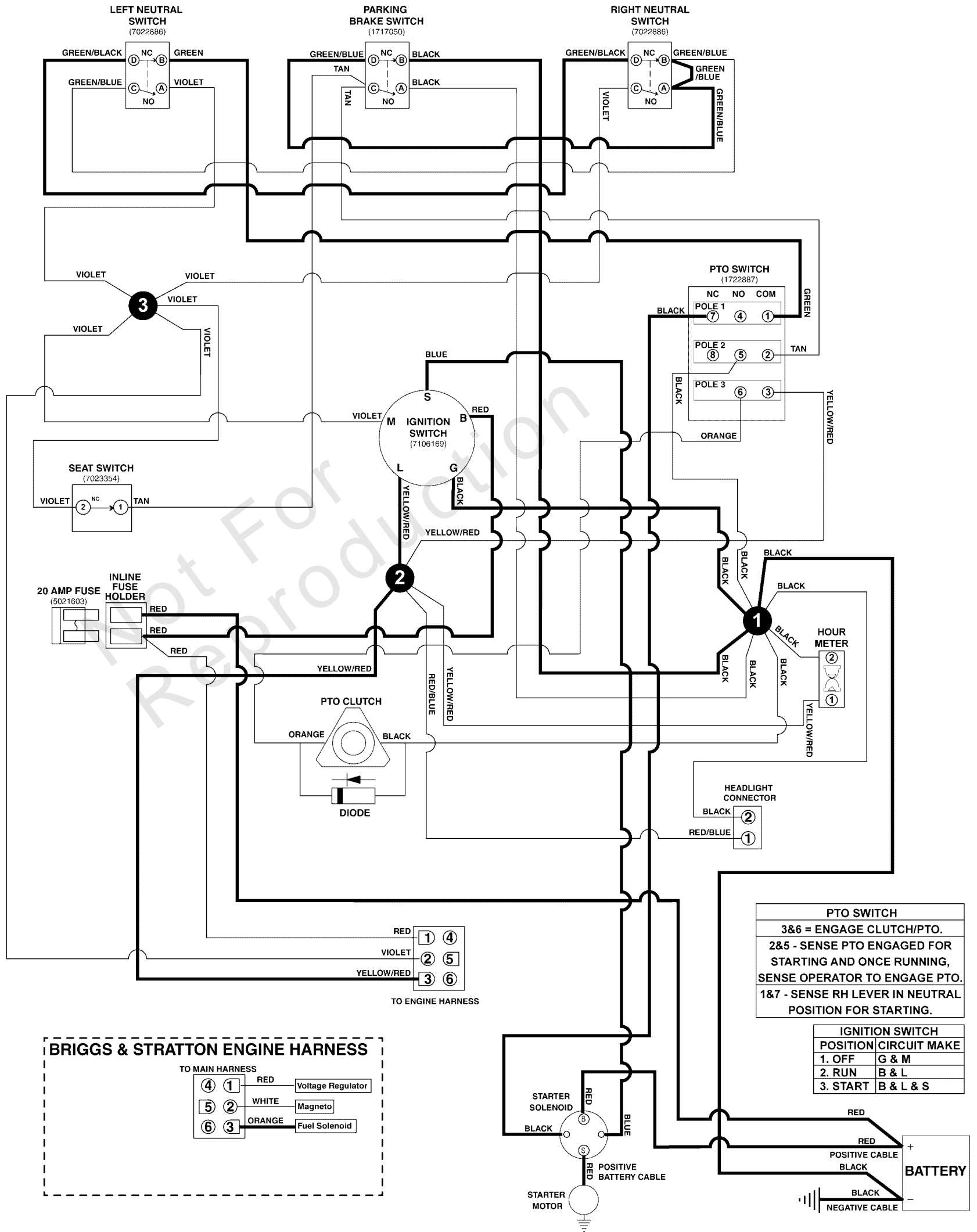
Note: Unless noted otherwise, use the standard torque specifications

Mfg. No: 2691816-00

80097605 MAIN WIRE HARNESS - BRIGGS & STRATTON 44C777 & 44T977 ENGINES

80097605A

(If internal schematic of the switch is not shown, the image of the switch represents the back view of the connector as it is connected to the switch.)



Electrical Schematic - Cranking Circuit - B&S 44C777 & 44T977

| REF NO | PART NO | QTY | DESCRIPTION |
|----------|-----------|-----|-----------------------|
| 80097605 | 84006894 | 1 | HARNES, WIRING |
| 7022886 | 7022886YP | 2 | SWITCH, DP NO/NC SNAP |
| 1717050 | 1717050SM | 1 | SWITCH-PUSH BUTT |
| 1722887 | 1722887SM | 1 | SWITCH-PTO PUSH |
| 7106169 | 7106169YP | 1 | SWITCH, IGNITION, DEL |
| 7023354 | 7023354YP | 1 | SWITCH, SEAT |
| 5021603 | 5021603SM | 1 | FUSE, ATO, 20 AMP |

Not For Reproduction

Electrical Schematic - Ignition Grounding Circuit/Op. Pres. - B&S 44C777 & 44T977

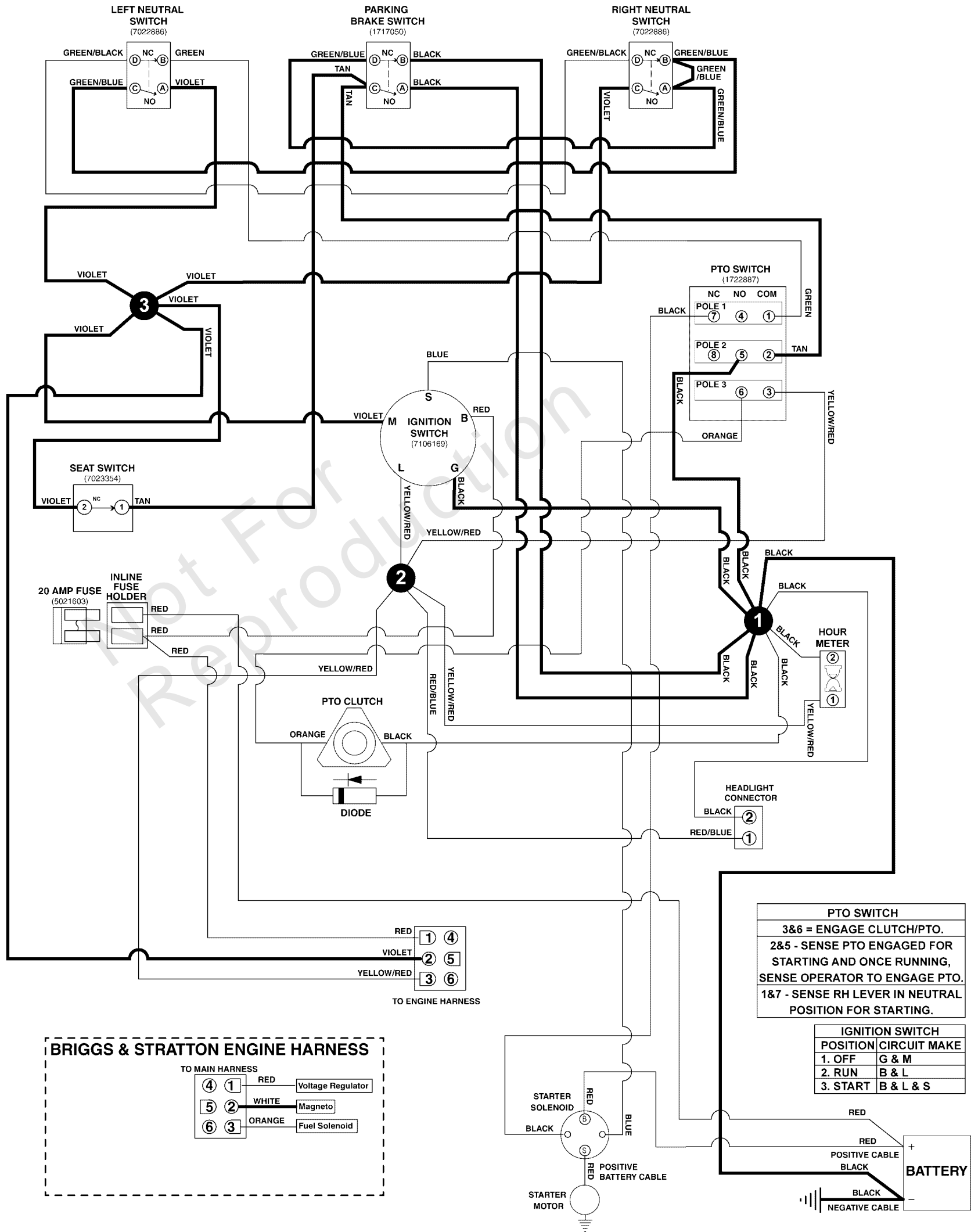
Note: Unless noted otherwise, use the standard torque specifications

Mfg. No: 2691816-00

80097605 MAIN WIRE HARNESS - BRIGGS & STRATTON 44C777 & 44T977 ENGINES

80097605A

(If internal schematic of the switch is not shown, the image of the switch represents the back view of the connector as it is connected to the switch.)



Electrical Schematic - Ignition Grounding Circuit/Op. Pres. - B&S 44C777 & 44T977

| REF NO | PART NO | QTY | DESCRIPTION |
|----------|-----------|-----|-----------------------|
| 80097605 | 84006894 | 1 | HARNES, WIRING |
| 7022886 | 7022886YP | 2 | SWITCH, DP NO/NC SNAP |
| 1717050 | 1717050SM | 1 | SWITCH-PUSH BUTT |
| 1722887 | 1722887SM | 1 | SWITCH-PTO PUSH |
| 7106169 | 7106169YP | 1 | SWITCH, IGNITION, DEL |
| 7023354 | 7023354YP | 1 | SWITCH, SEAT |
| 5021603 | 5021603SM | 1 | FUSE, ATO, 20 AMP |

Not For Reproduction

Electrical Schematic - PTO Clutch Circuit - B&S 44C777 & 44T977

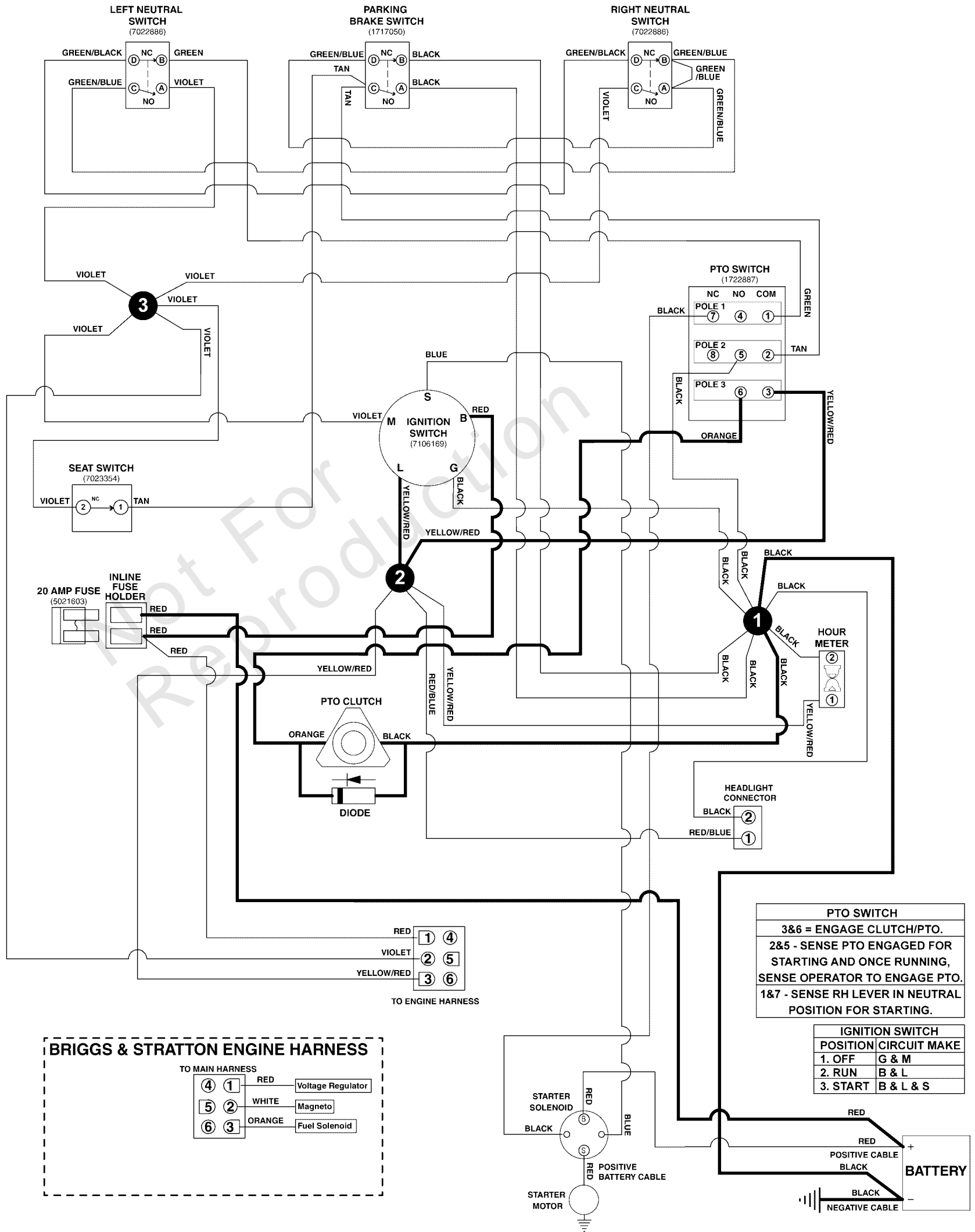
Note: Unless noted otherwise, use the standard torque specifications

Mfg. No: 2691816-00

80097605 MAIN WIRE HARNESS - BRIGGS & STRATTON 44C777 & 44T977 ENGINES

80097605A

(If internal schematic of the switch is not shown, the image of the switch represents the back view of the connector as it is connected to the switch.)



Electrical Schematic - PTO Clutch Circuit - B&S 44C777 & 44T977

| REF NO | PART NO | QTY | DESCRIPTION |
|----------|-----------|-----|-----------------------|
| 80097605 | 84006894 | 1 | HARNES, WIRING |
| 7022886 | 7022886YP | 2 | SWITCH, DP NO/NC SNAP |
| 1717050 | 1717050SM | 1 | SWITCH-PUSH BUTT |
| 1722887 | 1722887SM | 1 | SWITCH-PTO PUSH |
| 7106169 | 7106169YP | 1 | SWITCH, IGNITION, DEL |
| 7023354 | 7023354YP | 1 | SWITCH, SEAT |
| 5021603 | 5021603SM | 1 | FUSE, ATO, 20 AMP |

Not For Reproduction

Engine Group

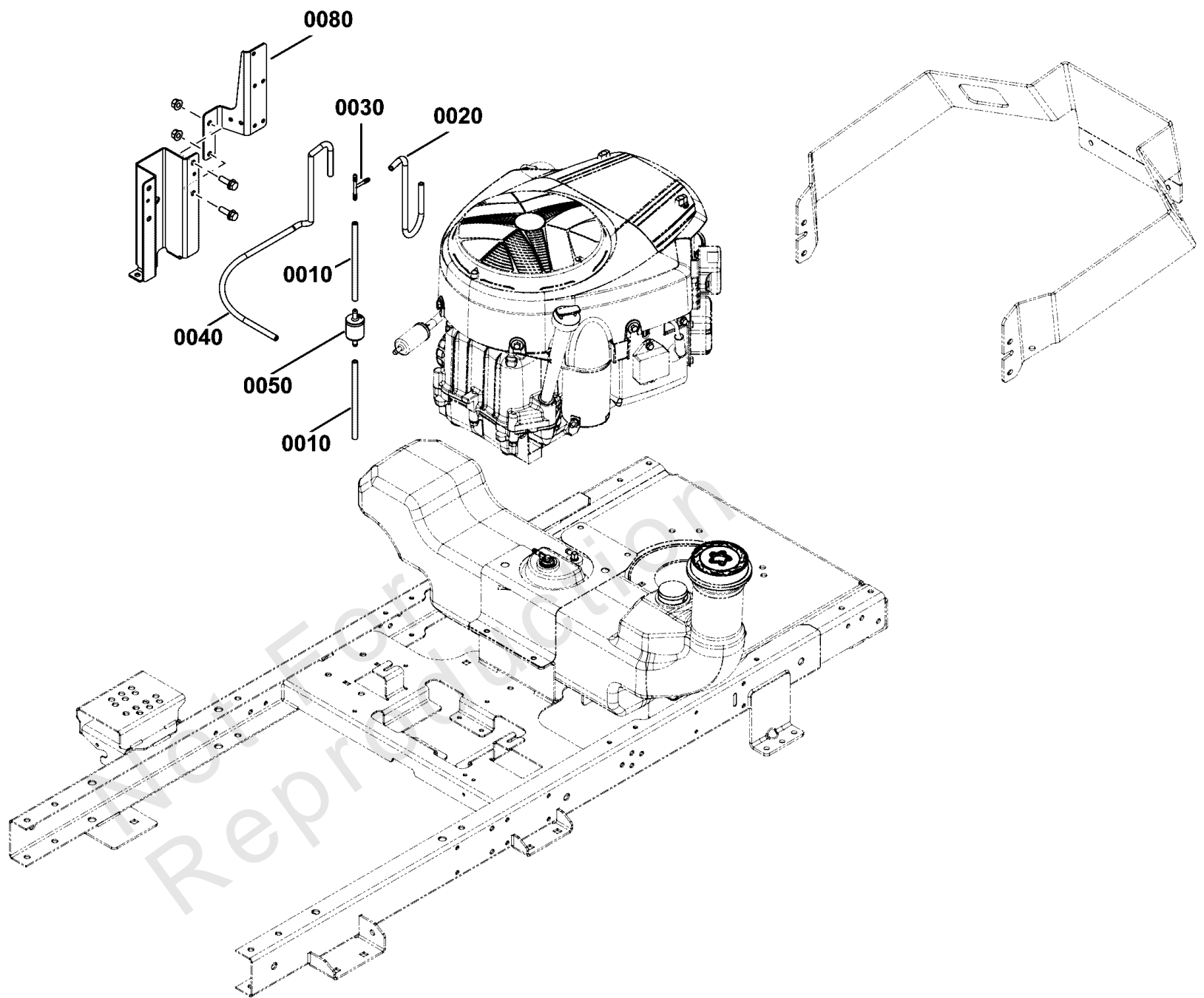
| REF NO | PART NO | QTY | DESCRIPTION |
|--------|----------------|-----|---|
| 0005 | 44T977-0005-G1 | 1 | * ENGINE, 25HP B&S COMM TURF, 1-1/8 X 4.29 -(Engine Model: 44N777-0005-G1) |
| 0010 | 84007555 | 1 | PULLEY, CRANKSHAFT |
| 0011 | 5022726YP | 1 | KEY 1/4 SQ X 1 1/2 |
| 0020 | 84006960 | 1 | CLUTCH |
| 0025 | 5021030SM | 1 | TIE WRAP, 5-1/2" LONG |
| 0050 | 84007266 | 1 | BOLT |
| 0060 | 84007267 | 1 | BRACKET |
| 0061 | 84007268 | 1 | PAD |
| 0062 | 5044617SM | 4 | WASHER, .34 X 1.25 X |
| 0064 | 5025055X18YP | 1 | BOLT, 5/16-18 X 2-1/4 |
| 0065 | 5025127SM | 1 | NUT, 5/16-18 HEX SERR |
| 0080 | 2828635SM | 4 | SCREW-HEX WSHR HD TAP |
| 0090 | 703054 | 1 | SCREW, 1/4-20X0.625 |
| 0095 | 22473GS | 1 | FLAT WASHER, M6 - 1/4" |
| 0100 | 1921880SM | 1 | LOCKWASHER-EXTERNALTO |
| 0110 | 1758350YP | 1 | MUFFLER |
| 0120 | 84006924 | 1 | HEAT SHIELD |
| 0130 | 690341 | 4 | SCREW -(Refer to Note: **) |
| 0135 | 690941 | 4 | NUT -(Refer to Note: ***) |
| 0140 | 690970 | 2 | GASKET, Exhaust |
| 0150 | 703800 | 6 | BOLT, CRRG, 5/16-18X1 |
| 0160 | 703115 | 8 | NUT |
| 0170 | 5050831X11YP | 1 | HOSE, 1/4" FUEL, 11.00" |
| 0180 | 93807 | 2 | CLAMP, Hose |
| 0190 | 1759205YP | 1 | CONTROL-THROTTLE |
| 0200 | 5100184SM | 1 | CABLE, CHOKE CONTROL, |
| 0205 | 703864 | 1 | WASHER, EXT, 3/8 |
| 0206 | 703895 | 1 | NUT, HEX, 3/8-24 |
| 0210 | 1739312YP | 1 | KNOB, THROTTLE |
| 0220 | 797483 | 1 | SCREW |
| 0230 | 703460 | 1 | NUT, Hex #8-32 |
| 0240 | 1726498SM | 1 | HOSE-OIL DRAIN .375ID |
| 0280 | 84006920 | 1 | PANEL, CONTROL |
| 0290 | 5022665SM | 3 | BODY CLIP, 1/4-20 X 1 |
| 0310 | 703953 | 5 | SCREW, 1/4-20X5/8 |
| 0370 | 5025585YP | 2 | BELLEVILLE WASHER |

Footnotes:

Note:** If your engine has muffler studs

Note:** If your engine does not have muffler studs

Note:* See your local Briggs & Stratton distributor for parts & service.



EVAP Group

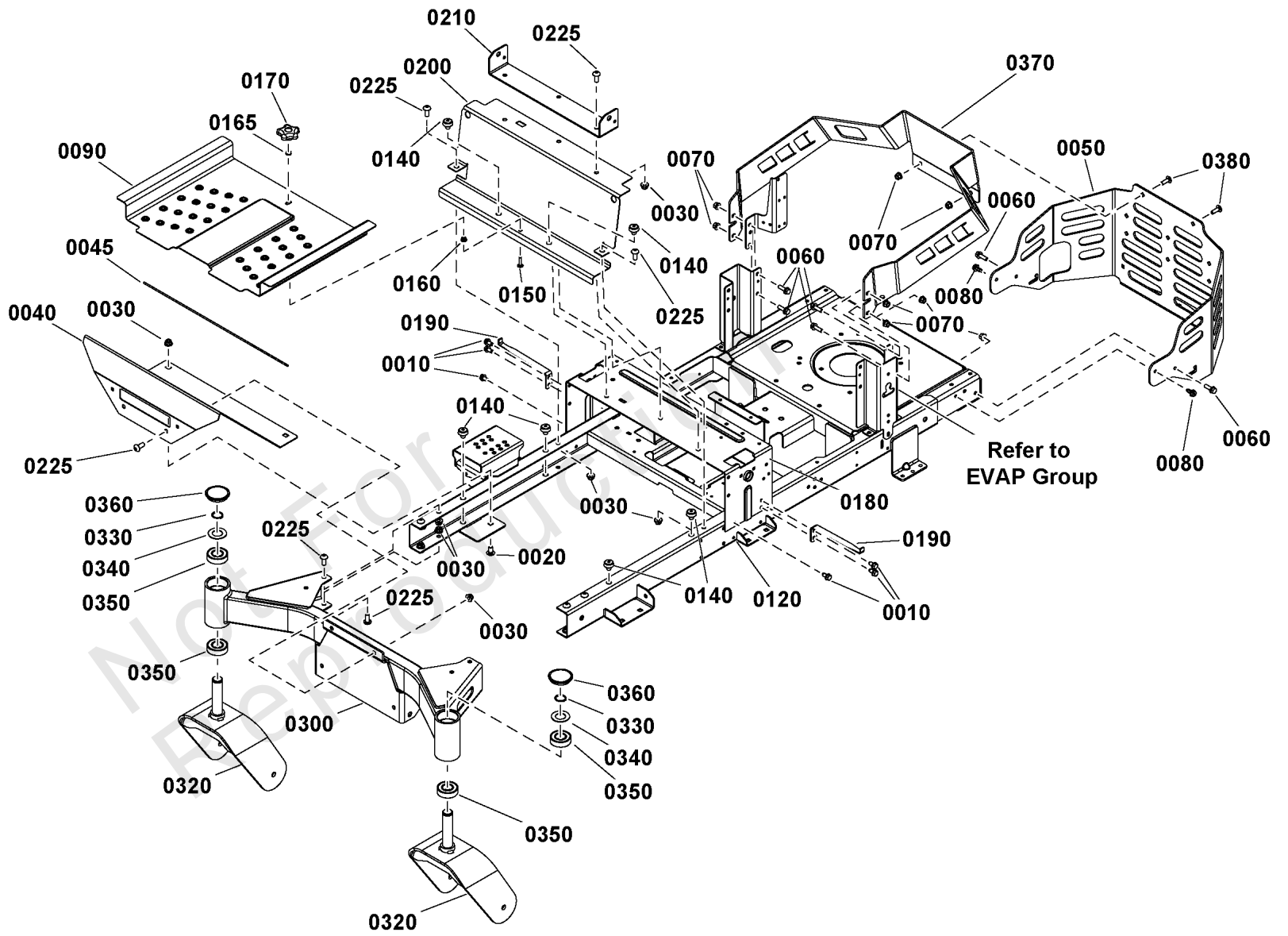
| REF NO | PART NO | QTY | DESCRIPTION |
|--------|--------------|-----|---|
| 0010 | 7700552X6YP | 2 | HOSE-VAPOR |
| 0020 | 7700552X12YP | 1 | HOSE, VAPOR,5MM ID,12 |
| 0030 | 5103062YP | 1 | FITTING, 3/16" TEE, B |
| 0040 | 7700552X26YP | 1 | HOSE, Vapor, 5 MM ID, 26.00 LG |
| 0050 | 84001895 | 1 | FILTER, Fuel |
| 0070 | 5021030SM | 5 | TIE WRAP, 5-1/2" LONG -(Not Illustrated) |
| 0080 | 1760538AYP | 1 | BRACKET |

Not For Reproduction

Frame Group

Note: Unless noted otherwise, use the standard torque specifications

Mfg. No: 2691816-00



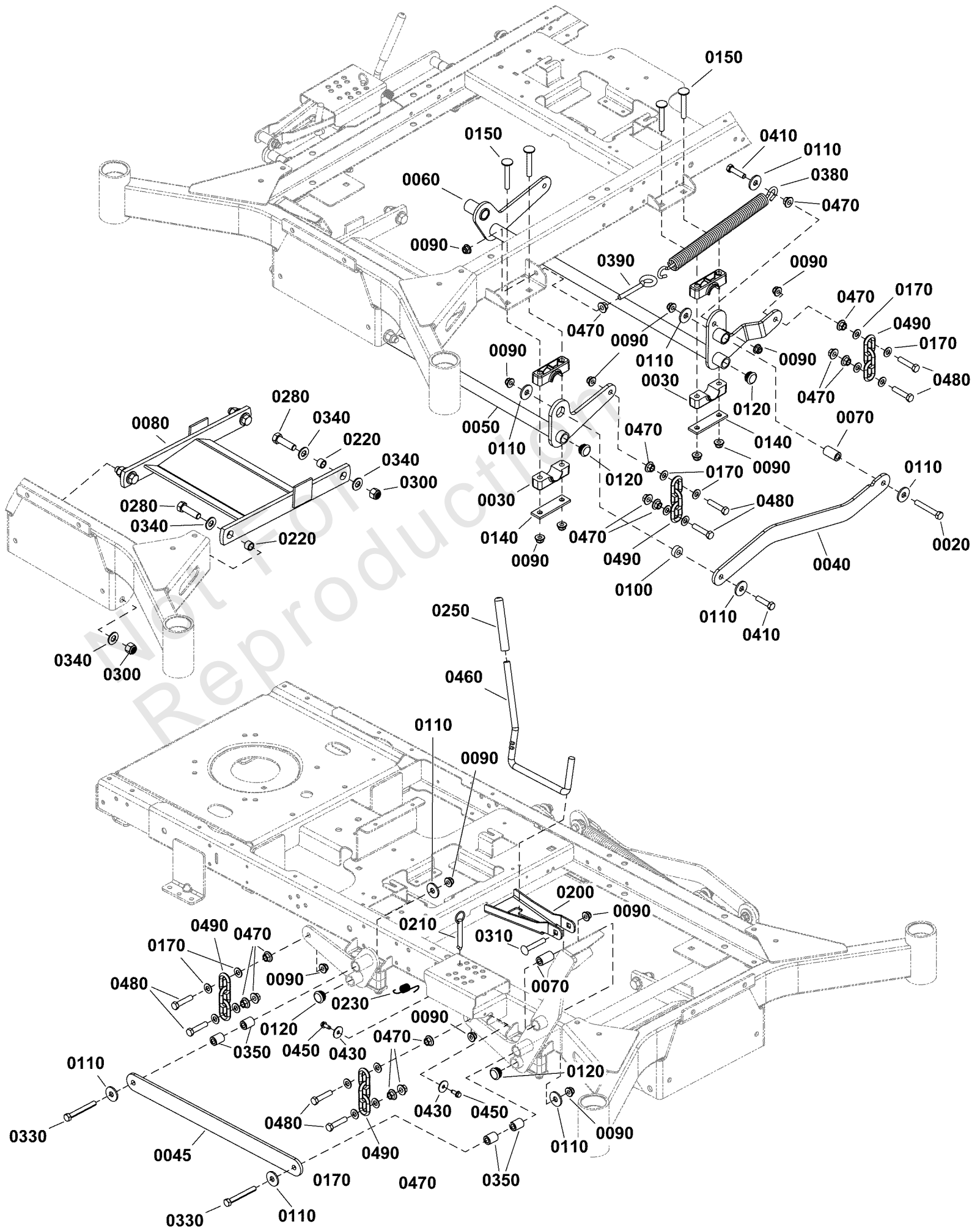
Frame Group

| REF NO | PART NO | QTY | DESCRIPTION |
|--------|------------|-----|--------------------------------------|
| 0010 | 703949 | 6 | SCREW, 5/16-18.625 |
| 0020 | 703448 | 2 | BOLT, 3/8-16X.75 G5 |
| 0030 | 5025394SM | 17 | NUT, 3/8-16 HEX NYLOCK |
| 0040 | 84006904 | 1 | FOOT REST, XT |
| 0045 | 5101011SM | 1 | SAFETY WALK, 8.00 X 1 |
| 0050 | 84006906 | 1 | BUMPER, Rear, XT |
| 0060 | 703410 | 6 | BOLT,5/16-18X1 |
| 0070 | 5025392SM | 8 | NUT, Ny Lock Flange, 5/16-18 |
| 0080 | 84007040 | 2 | SCREW. Hex, Washer, 5/16-18 x 3/4 |
| 0090 | 1757813DYP | 1 | PAN, Foot |
| 0120 | ----- | 1 | FRAME -(Not a serviceable part) |
| 0140 | 197546GS | 6 | MOUNT-VIBRATION |
| 0150 | 7090496YP | 1 | RHSSNB, 1/4C X1 GR5 Z |
| 0160 | 703233 | 1 | NUT, 1/4-20, GR5 |
| 0165 | 15X143MA | 1 | NUT,25-20 HEX FLG CTR |
| 0170 | 707785 | 1 | KNOB |
| 0180 | 84007041 | 1 | CONTROL BRACKET |
| 0190 | 1758240AYP | 2 | BRACKET, Fender |
| 0200 | 1757796DYP | 1 | BRACKET, Brand |
| 0210 | 84007042 | 1 | PLATE. Seat Pivot |
| 0225 | 84004627 | 15 | CAPSCREW |
| 0300 | 84007061 | 1 | WELDMENT, Fixed Axle |
| 0320 | 84006897 | 2 | WELDMENT, Caster |
| 0330 | 703993 | 2 | RETAINER, EXT RING, 1 |
| 0340 | 703199 | 2 | WASHER, 1 |
| 0350 | 1758354YP | 4 | BEARING |
| 0360 | 5105524YP | 2 | CAP |
| 0370 | 84006908 | 1 | BRACKET, Fascia, Rear |
| 0380 | 703800 | 2 | BOLT, CRRG, 5/16-18X1 |

Lift Group

Note: Unless noted otherwise, use the standard torque specifications

Mfg. No: 2691816-00



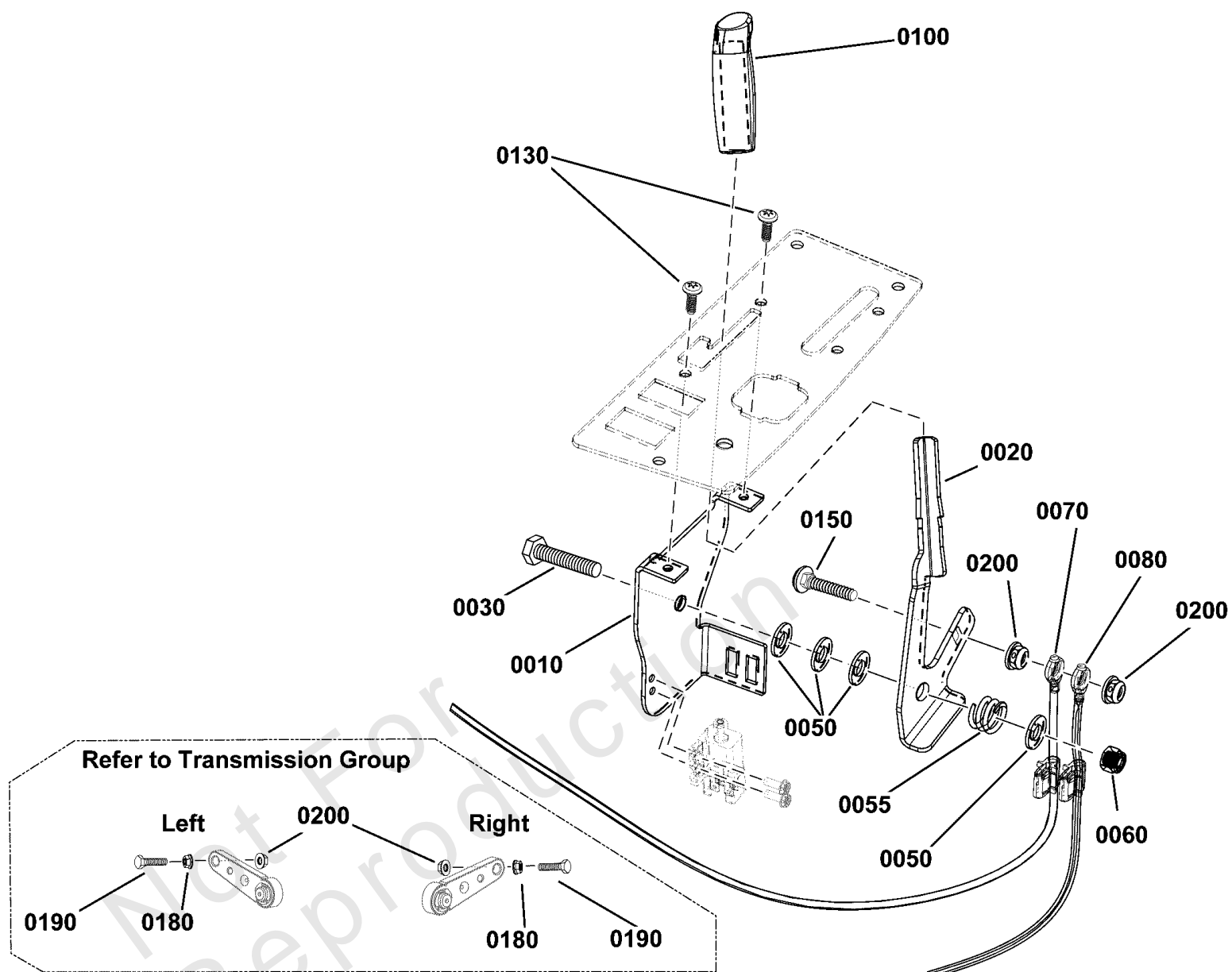
Lift Group

| REF NO | PART NO | QTY | DESCRIPTION |
|--------|--------------|-----|------------------------------|
| 0020 | 5025013X20SM | 1 | BOLT, 3/8-16 X 2-1/2" |
| 0030 | 5100634SM | 8 | PIVOT BLOCK, PLASTIC |
| 0040 | 84006925 | 1 | LINKAGE |
| 0045 | 84006926 | 1 | LINKAGE, Lift Assist, RH |
| 0050 | 84006914 | 1 | LIFTER |
| 0060 | 84006915 | 1 | SHAFT ASSEMBLY |
| 0070 | 1756612YP | 2 | BUSHING, DIFF. LOCK |
| 0080 | 84006928 | 1 | BAR, PULLER |
| 0090 | 5025394SM | 19 | NUT, 3/8-16 HEX NYLOCK |
| 0100 | 1667811SM | 1 | SPACER |
| 0110 | 1919384SM | 9 | WASHER-0.375(0.44IDX1 |
| 0120 | 84007739 | 4 | PLUG |
| 0140 | 5403925AYP | 4 | PLATE, Pivot |
| 0150 | 1960615SM | 8 | BOLT-RD HD SQ NK 3/8 |
| 0170 | 5025156SM | 16 | WASHER, Flat, 3/8 |
| 0200 | 1758284AYP | 1 | BRACKET |
| 0210 | 5103021YP | 1 | HITCH PIN, 3/8 X 2-1/ |
| 0220 | 5020870SM | 4 | INSERT, BEARING |
| 0230 | 1758283YP | 1 | SPRING, EXTENSION |
| 0250 | 5021880SM | 1 | GRIP, FOAM |
| 0280 | 5025018X14SM | 4 | BOLT, 1/2-20 X 1-3/4" GD5 YZ |
| 0300 | 5025098SM | 4 | NUT, 1/2-20 HEX NYLON |
| 0310 | 7900009SM | 1 | RHSSNB, 3/8-16 X 2-1/ |
| 0330 | 5025013X24SM | 2 | BOLT, 3/8-16 X 3" GD5 |
| 0340 | 5025158SM | 8 | WASHER, 1/2" SAE |
| 0350 | 1733068SM | 4 | SPACER-0.390IDX0.750O |
| 0380 | 5023355SM | 1 | SPRING, DECK LIFT ASS |
| 0390 | 5025429SM | 1 | EYEBOLT - 3/8-16 |
| 0410 | 703406 | 2 | CAPSCREW,3/8-16X1.5 |
| 0430 | 5025288YP | 2 | WASHER, 1/4 FENDER |
| 0450 | 703054 | 2 | SCREW, 1/4-20X0.625 |
| 0460 | 5105717YP | 1 | ROD |
| 0470 | 5025128SM | 14 | NUT, 3/8-16 HEX SERRA |
| 0480 | 5025013X14SM | 8 | BOLT, 3/8-16 X 1-3/4" |
| 0490 | 5050878X3SM | 4 | CHAIN, 5/16" GD30, 3 |

Parking Brake Group

Note: Unless noted otherwise, use the standard torque specifications

Mfg. No: 2691816-00



Parking Brake Group

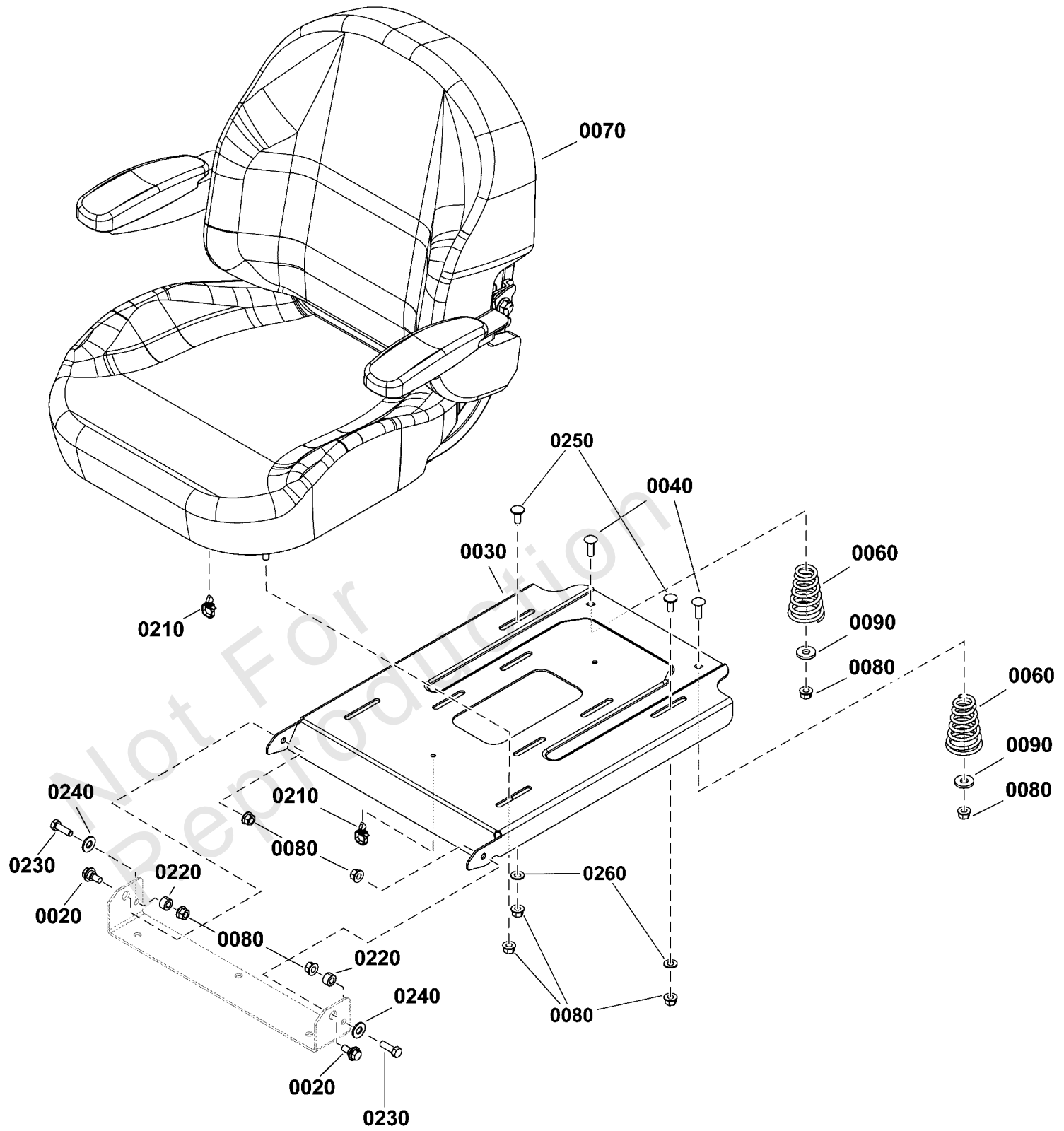
| REF NO | PART NO | QTY | DESCRIPTION |
|--------|--------------|-----|---|
| 0010 | 84006916 | 1 | BRACKET |
| 0020 | 84006917 | 1 | LEVER |
| 0030 | 703589 | 1 | CAPSCREW, 3/8-16X2 |
| 0050 | 703878 | 1 | WASHER, FLAT |
| 0055 | 7028036YP | 4 | SPRING |
| 0060 | 5025096SM | 1 | NUT, 3/8-16 HEX NYLON |
| 0070 | 84006918 | 1 | CABLE, BRAKE |
| 0080 | 84006919 | 1 | CABLE, BRAKE |
| 0100 | 84001706 | 1 | GRIP |
| 0130 | 7090999SM | 2 | SCREW, Phillips Head, 1/4-20 X 5/8 |
| 0140 | 703586 | 2 | TIE, SELF LOCKING -(Not Illustrated) |
| 0150 | 703175 | 3 | BOLT, RD SH SQ |
| 0180 | 5025127SM | 1 | NUT, 5/16-18 HEX SERR |
| 0190 | 5025011X12SM | 2 | BOLT, 5/16-18 X 1-1/2 |
| 0200 | 5025392SM | 2 | NUT, Ny Lock Flange, 5/16-18 |

Not For Reproduction

Seat Group

Note: Unless noted otherwise, use the standard torque specifications

Mfg. No: 2691816-00



Seat Group

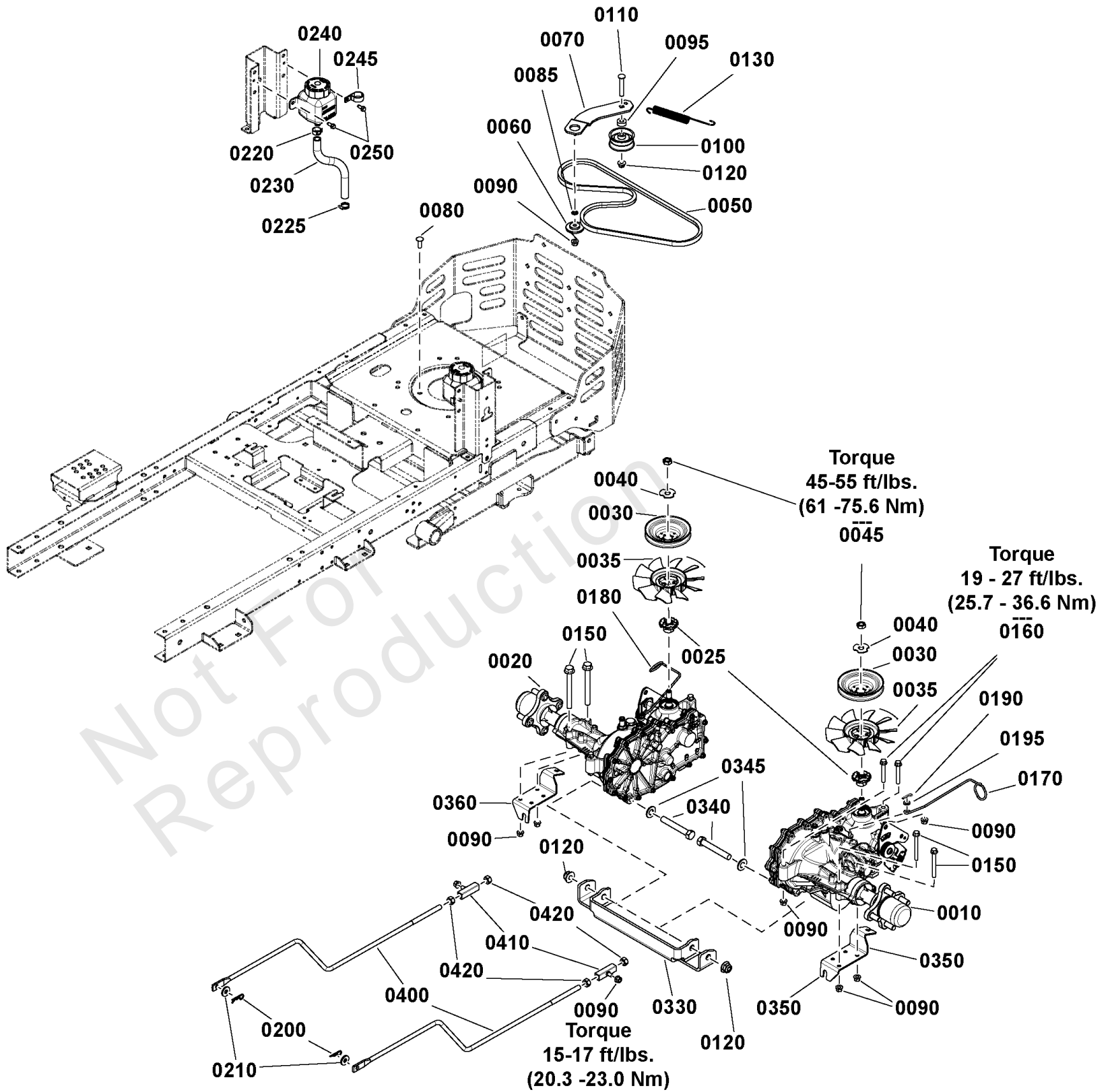
| REF NO | PART NO | QTY | DESCRIPTION |
|---------|-------------|-----|-------------------------------------|
| 0020 | 1752802YP | 2 | BOLT, SHLDR, 5/16-18 |
| 0030 | 84001618 | 1 | SLIDE, SEAT |
| 0040 | 703483 | 2 | BOLT,5/16-18X1.000,RO |
| 0060 | 1717051SM | 2 | SPRING, Seat |
| 0070 | 84006921 | 1 | SEAT |
| 0070-10 | 84006998 | 1 | COVER, Cushion, Snapper |
| 0070-20 | 84007000 | 1 | COVER, Back, Snapper |
| 0080 | 5025392SM | 10 | NUT, Ny Lock Flange, 5/16-18 |
| 0090 | 704128 | 2 | WASHER |
| 0210 | 708733 | 2 | TIE, Cable 1/4 |
| 0220 | 5103767YP | 2 | SPACER, .33X.625X.360 |
| 0230 | 5025011X8SM | 2 | CAPSCREW, Hex Head, 5/16-18 X 1 |
| 0240 | 703878 | 2 | WASHER, FLAT |
| 0250 | 703350 | 2 | WASHER |
| 0260 | 703185 | 2 | BOLT, Round Head, Short Square Neck |

Not For Reproduction

Transmission Group

Note: Unless noted otherwise, use the standard torque specifications

Mfg. No: 2691816-00



Transmission Group

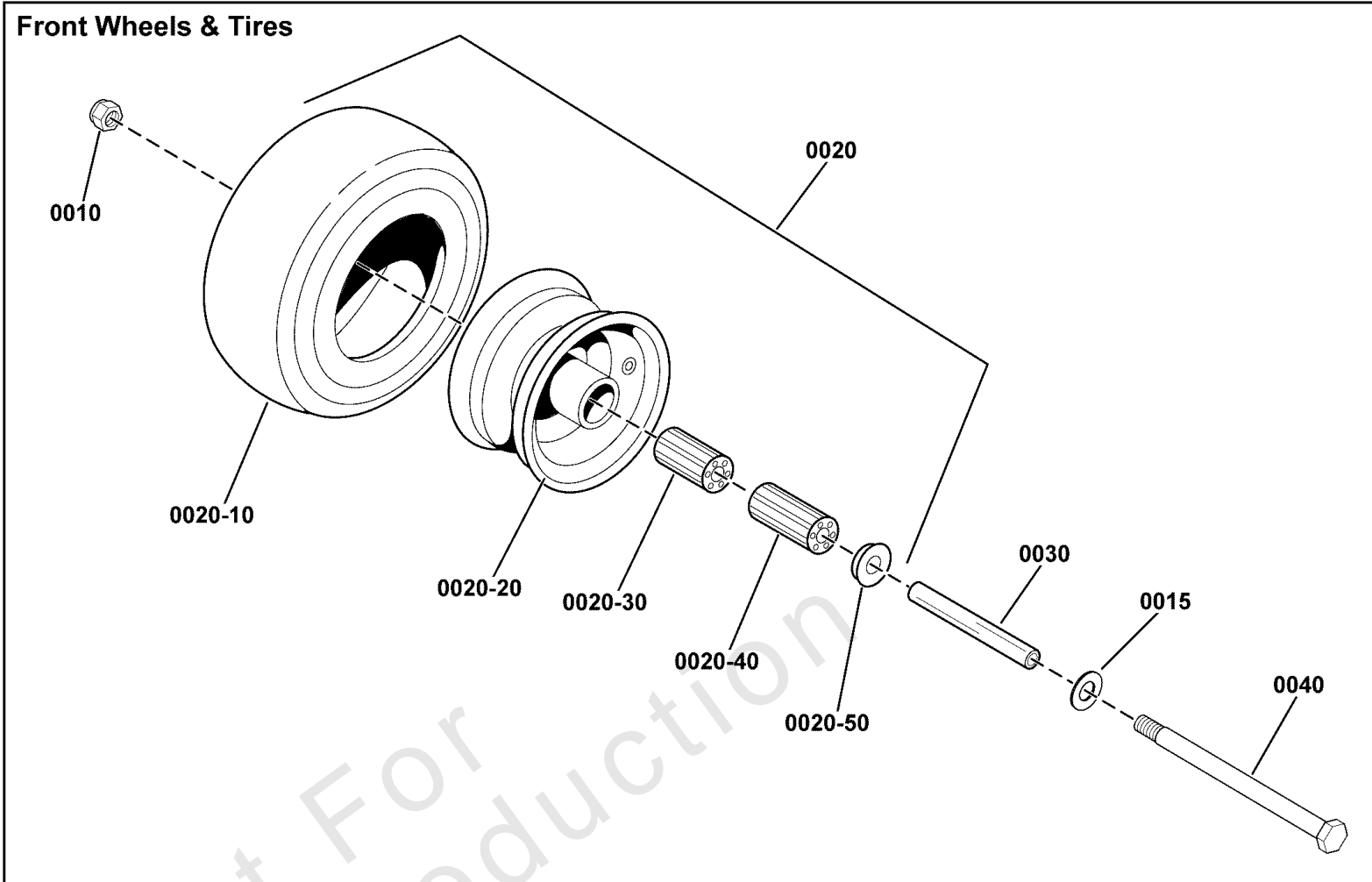
| REF NO | PART NO | QTY | DESCRIPTION |
|--------|---------------|-----|--------------------------------------|
| 0010 | 84006912 | 1 | TRANSAXLE, ZT3100, ZL-GPEE-UL7B-2XLX |
| 0020 | 84006913 | 1 | TRANSAXLE, ZT3100, ZL-KPEE-UL7C-3XLX |
| 0025 | 84003847 | 2 | HUB |
| 0030 | 1759447YP | 2 | PULLEY, Transmission |
| 0035 | 84006902 | 2 | FAN, 7" |
| 0040 | 5102914YP | 2 | WASHER, ZT5400, SLOTT |
| 0045 | 5102916YP | 2 | NUT, ZT5400 |
| 0050 | 84006539 | 1 | BELT, 51.65" |
| 0060 | 1727935SM | 1 | SPACER-PIVOT 0.330ID |
| 0070 | 1758044AYP | 1 | ARM, Idler |
| 0080 | 703800 | 1 | BOLT, CRRG, 5/16-18X1 |
| 0085 | 703297 | 1 | RETAINER, GR5, 5/16 |
| 0090 | 703115 | 11 | NUT |
| 0095 | 1667811SM | 1 | SPACER |
| 0100 | 1668477SM | 1 | PULLEY, Idler, 2.25" OD, .378 ID |
| 0110 | 1931355SM | 1 | BOLT, Carriage, 3/8 -16 |
| 0120 | 5025394SM | 3 | NUT, 3/8-16 HEX NYLOCK |
| 0130 | 1758045YP | 1 | SPRING-EXTENSION |
| 0150 | 707943 | 4 | SCREW |
| 0160 | 707944 | 4 | SCREW, Washer Head, 5/16-18 X 2 1/4 |
| 0170 | 1759245YP | 1 | ROD, Release, LH |
| 0180 | 1759246YP | 1 | ROD, Release, RH |
| 0190 | 703430 | 2 | PIN, 13X1.19 |
| 0195 | 5025154 | 2 | WASHER, 1/4 SAE |
| 0200 | 703300 | 2 | PIN, 3/32 X 1.6 |
| 0210 | 704128 | 2 | WASHER |
| 0220 | 5025474SM | 2 | CLAMP - HOSE |
| 0225 | 5021392SM | 2 | CLAMP, #6 HOSE, STAIN |
| 0230 | 5050857X9P5YP | 2 | HOSE, 9.50 |
| 0240 | 5100473SM | 2 | RESERVOIR |
| 0245 | 5021500SM | 1 | CLAMP, VINYL INSULATED, 1.00 |
| 0250 | 703054 | 4 | SCREW, 1/4-20X0.625 |
| 0330 | 1759172AYP | 1 | SUPPORT |
| 0340 | 5025013X20 | 2 | BOLT, 3/8-16 X 2-1/2" GD5 CZ |
| 0345 | 5025156SM | 2 | WASHER, Flat, 3/8 |
| 0350 | 84006958 | 1 | BRACKET |
| 0360 | 84006959 | 1 | BRACKET |
| 0400 | 84002180 | 2 | CONTROL ROD, Transmission |
| 0410 | 84002181 | 2 | TRUNNION |
| 0420 | 7090460SM | 4 | NUT, 7/16F, GR5, Hex |

Wheel & Tire Group

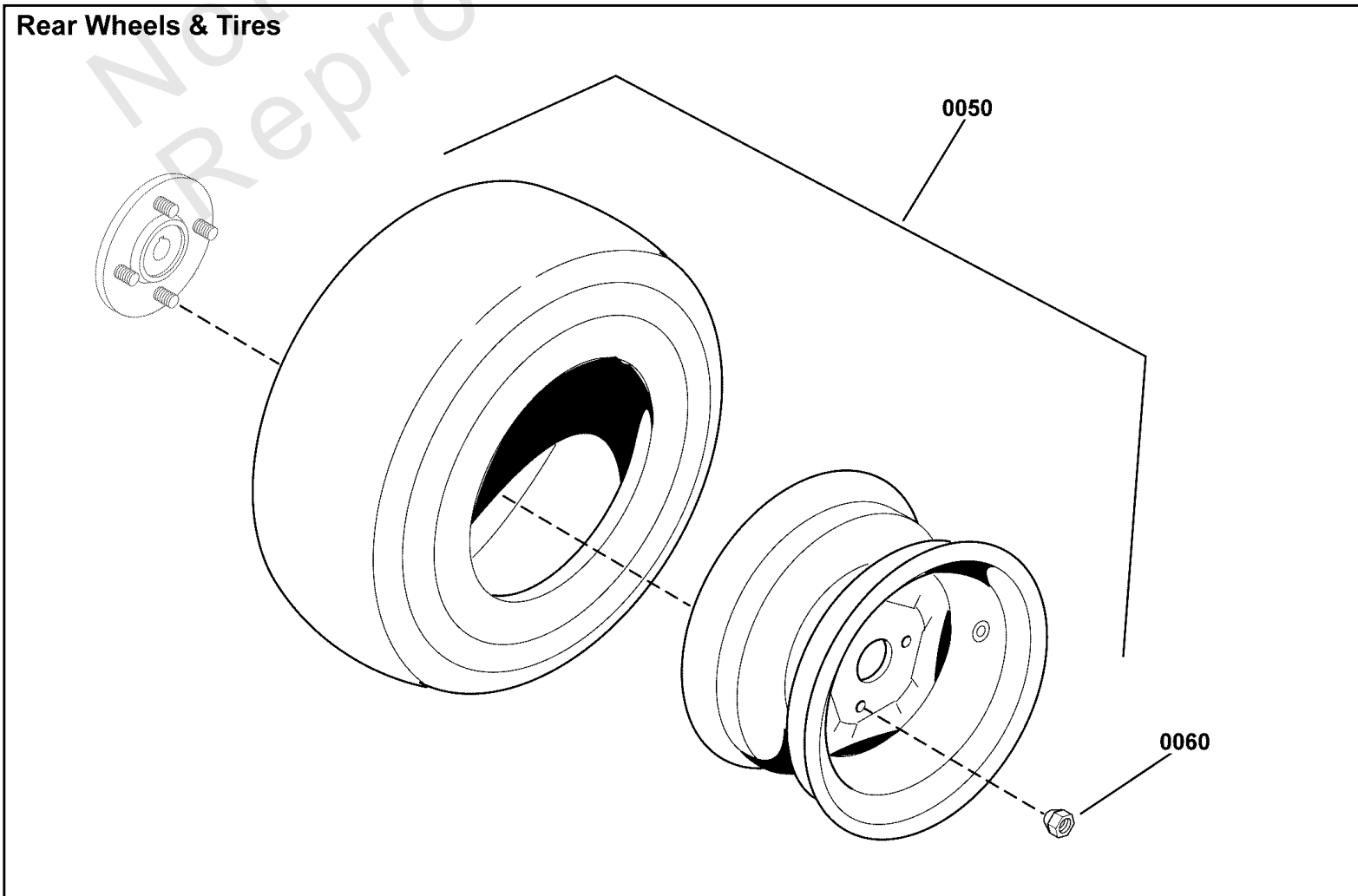
Note: Unless noted otherwise, use the standard torque specifications

Mfg. No: 2691816-00

Front Wheels & Tires



Rear Wheels & Tires



Wheel & Tire Group

| REF NO | PART NO | QTY | DESCRIPTION |
|---------|--------------|-----|---|
| 0010 | 5025396SM | 2 | NUT, Hex Flange, 1/2-13 |
| 0015 | 5025158SM | 2 | WASHER, 1/2" SAE |
| 0020 | 84006933 | 2 | WHEEL ASSEMBLY, Front, Black |
| 0020-10 | 84002535 | 2 | TIRE, 13X650-6-4 PLY SMOOTH |
| 0020-20 | ----- | 2 | RIM, 6" Dia. X 4.5" Bead Width -(Not a serviceable part) |
| 0020-30 | 84002537 | 2 | BEARING, OPEN GAGE ROLLER, 3/4" ID X 2.75" |
| 0020-40 | 5021182SM | 2 | BEARING, Roller (1 per tire) |
| 0020-50 | 5021043SM | 2 | RETAINER, Bearing |
| 0030 | 84002029 | 2 | CASTER AXLE SHAFT, .51"ID X .75"ODX 7.16 |
| 0040 | 5025017X72YP | 2 | BOLT, 1/2-13 X 9 GD5 |
| 0050 | 84006935 | 2 | WHEEL ASSEMBLY |
| 0060 | 5020601SM | 8 | NUT, 1/2-20, FOR WHEEL BOLT SILVER |

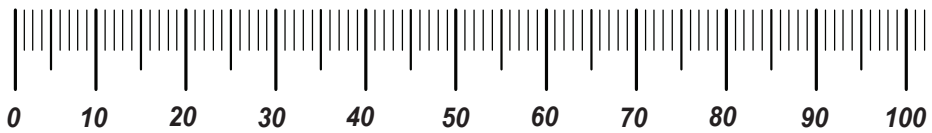
Not For Reproduction

Hardware Identification & Torque Specifications

| Torque Specification Chart | | | | | | | | |
|--|-----------|------|-----------|------|------------|------|------------|------|
| FOR STANDARD METRIC MACHINE HARDWARE (Tolerance ± 20%) | | | | | | | | |
| Property Class | 5.6 | | 8.8 | | 10.9 | | 12.9 | |
| | Class 5.6 | | Class 8.8 | | Class 10.9 | | Class 12.9 | |
| Size Of Hardware | in/lbs | Nm. | in/lbs | Nm. | in/lbs | Nm. | in/lbs | Nm. |
| | ft/lbs | | ft/lbs | | ft/lbs | | ft/lbs | |
| M3 | 5.88 | .56 | 13.44 | 1.28 | 19.2 | 1.80 | 22.92 | 2.15 |
| M4 | 13.44 | 1.28 | 30.72 | 2.90 | 43.44 | 4.10 | 52.56 | 4.95 |
| M5 | 26.4 | 2.50 | 60.96 | 5.75 | 5.97 | 8.10 | 7.15 | 9.7 |
| M6 | 44.64 | 4.3 | 7.3 | 9.9 | 10.3 | 14 | 12.1 | 16.5 |
| M7 | 5.2 | 7.1 | 12.1 | 16.5 | 16.9 | 23 | 19.9 | 27 |
| M8 | 7.7 | 10.5 | 17.7 | 24 | 25 | 34 | 29 | 40 |
| M10 | 15 | 21 | 35 | 48 | 50 | 67 | 59 | 81 |
| M12 | 26 | 36 | 61 | 83 | 86.2 | 117 | 103 | 140 |
| M14 | 42 | 58 | 101 | 132 | 136 | 185 | 162 | 220 |
| M16 | 64 | 88 | 147 | 200 | 210 | 285 | 250 | 340 |
| M18 | 89 | 121 | 202 | 275 | 287 | 390 | 346 | 470 |
| M20 | 126 | 171 | 290 | 390 | 405 | 550 | 486 | 660 |
| M22 | 169 | 230 | 390 | 530 | 559 | 745 | 656 | 890 |
| M24 | 217 | 295 | 497 | 375 | 708 | 960 | 840 | 1140 |
| M27 | 320 | 435 | 733 | 995 | 1032 | 1400 | 1239 | 1680 |
| M30 | 435 | 590 | 995 | 1350 | 1401 | 1900 | 1681 | 2280 |
| M33 | 590 | 800 | 1349 | 1830 | 1902 | 2580 | 2278 | 3090 |
| M36 | 759 | 1030 | 1740 | 2360 | 2441 | 3310 | 2935 | 3980 |
| M39 | 988 | 1340 | 2249 | 3050 | 3163 | 4290 | 3798 | 5150 |

| Torque Specification Chart | | | | | | |
|---|-------------|-------|-------------|-------|-------------|---------|
| FOR STANDARD MACHINE HARDWARE (Tolerance ± 20%) | | | | | | |
| Hardware Grade | No Marks | | SAE Grade 5 | | SAE Grade 8 | |
| | SAE Grade 2 | | SAE Grade 5 | | SAE Grade 8 | |
| Size Of Hardware | in/lbs | Nm. | in/lbs | Nm. | in/lbs | Nm. |
| | ft/lbs | | ft/lbs | | ft/lbs | |
| 8-32 | 19 | 2.1 | 30 | 3.4 | 41 | 4.6 |
| 8-36 | 20 | 2.3 | 31 | 3.5 | 43 | 4.9 |
| 10-24 | 27 | 3.1 | 43 | 4.9 | 60 | 6.8 |
| 10-32 | 31 | 3.5 | 49 | 5.5 | 68 | 7.7 |
| 1/4-20 | 66 | 7.6 | 8 | 10.9 | 12 | 16.3 |
| 1/4-28 | 76 | 8.6 | 10 | 13.6 | 14 | 19.0 |
| 5/16-18 | 11 | 15.0 | 17 | 23.1 | 25 | 34.0 |
| 5/16-24 | 12 | 16.3 | 19 | 25.8 | 29 | 34.0 |
| 3/8-16 | 20 | 27.2 | 30 | 40.8 | 45 | 61.2 |
| 3/8-24 | 23 | 31.3 | 35 | 47.6 | 50 | 68.0 |
| 7/16-14 | 30 | 40.8 | 50 | 68.0 | 70 | 95.2 |
| 7/16-20 | 35 | 47.6 | 55 | 74.8 | 80 | 108.8 |
| 1/2-13 | 50 | 68.0 | 75 | 102.0 | 110 | 149.6 |
| 1/2-20 | 55 | 74.8 | 90 | 122.4 | 120 | 163.2 |
| 9/16-12 | 65 | 88.4 | 110 | 149.6 | 150 | 204.0 |
| 9/16-18 | 75 | 102.0 | 120 | 163.2 | 170 | 231.2 |
| 5/8-11 | 90 | 122.4 | 150 | 204.0 | 220 | 299.2 |
| 5/8-18 | 100 | 136 | 180 | 244.8 | 240 | 326.4 |
| 3/4-10 | 160 | 217.6 | 260 | 353.6 | 386 | 525.0 |
| 3/4-16 | 180 | 244.8 | 300 | 408.0 | 420 | 571.2 |
| 7/8-9 | 140 | 190.4 | 400 | 544.0 | 600 | 816.0 |
| 7/8-14 | 155 | 210.8 | 440 | 598.4 | 660 | 897.6 |
| 1-8 | 220 | 299.2 | 580 | 788.8 | 900 | 1,244.0 |
| 1-12 | 240 | 326.4 | 640 | 870.4 | 1,000 | 1,360.0 |

The guides and ruler furnished below are designed to help you select the appropriate hardware.

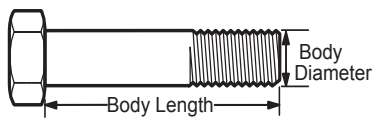


Nut, M8

Thread Diameter (mm)

Inside Diameter (in) Threads per inch

Nut, 1/2-16

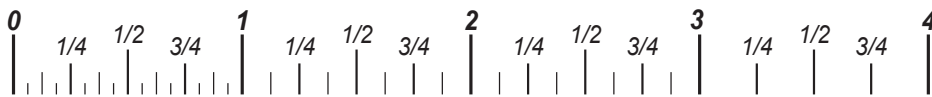


Screw, M8- 1.25 x 25

Thread Diameter (mm) Distance between threads (mm) Body Length (mm)

Body Diameter Threads per inch Body Length (in)

Screw, 1/2- 16 x 2



Standard Hardware Sizing

When a washer or nut is identified as 1/2" (M8), this is the *Nominal size*, meaning the *inside diameter* is 1/2 inch (8mm metric thread diameter); if a second number is present it represents the *threads per inch* (distance between threads).

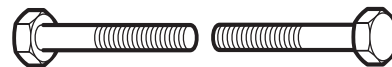
When bolt or capscrew is identified as 1/2 - 16 x 2" (M8 - 1.25 x 50), this means the *Nominal size*, or body diameter is 1/2 inch (8mm metric thread diameter), the second number, 16, represents the *threads per inch*, (*distance between threads*). The final number is the body length of the bolt or screw, 2 inches (50mm).

NOTES

- These torque values are to be used for all hardware excluding: locknuts, self-tapping screws, thread forming screws, sheet metal screws and socket head setscrews.
- Recommended seating torque values for locknuts:
 - for prevailing torque locknuts - use 65% of grade 5 torques.
 - for flange whizlock nuts and screws - use 135% of grade 5 torques.
- Unless otherwise noted on assembly drawings, all torque values must meet this specification.

Common Hardware Types

Hex Head Capscrew



Washer



Carriage Bolt



Hex Nut

Wrench & Fastener Size Guide

| | | | | |
|----------------------------------|----------------------------------|----------------------------------|--|---------------------------------|
| | | | | |
| 1/4" Bolt or Nut Wrench—7/16" | 5/16" Bolt or Nut Wrench—1/2" | 3/8" Bolt or Nut Wrench—9/16" | 7/16" Bolt or Nut Wrench (Bolt)—5/8" Wrench (Nut)—11/16" | 1/2" Bolt or Nut Wrench—3/4" |
| M6 Bolt or Nut Wrench—10mm | M8 Bolt or Nut Wrench—13mm | M10 Bolt or Nut Wrench—17mm | M12 Bolt or Nut Wrench—19mm | M14 Bolt or Nut Wrench—22mm |

