

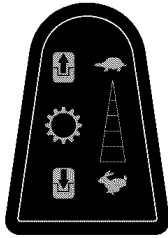
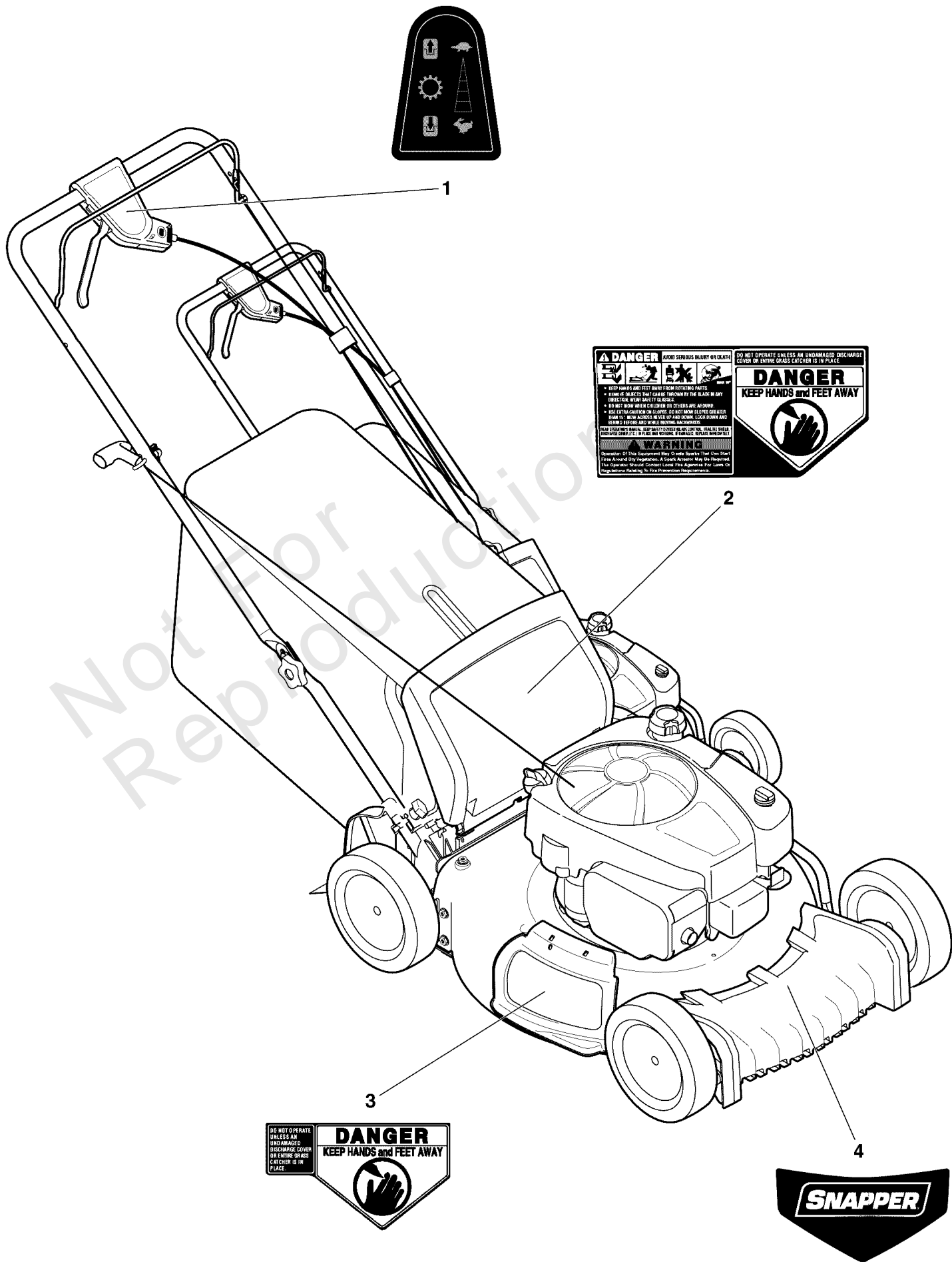


Parts Manual

Mfg. No: 12BVC3BD707
1696845-00, SP90 775 Series 21" RWD
Variable Speed Walk Behind Mower

| Model Components | Page |
|---------------------------------|-------------|
| Decals Group..... | 4 |
| Deck Group..... | 6 |
| Drive Group..... | 8 |
| Engine Group..... | 10 |
| Handle Group..... | 12 |
| Torque Specification Chart..... | 14 |

Not For
Reproduction



Decals Group

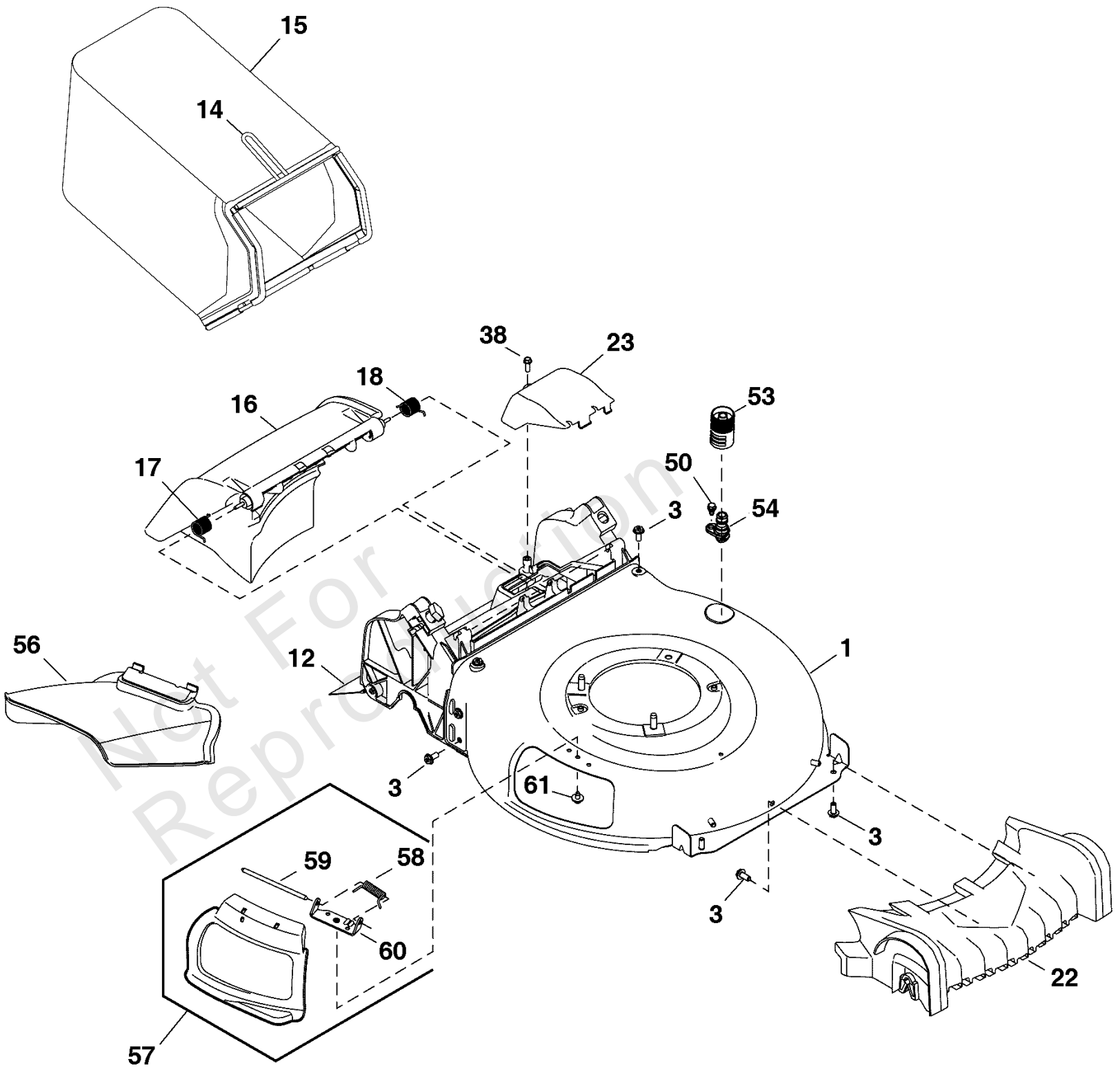
| REF NO | PART NO | QTY | DESCRIPTION |
|---------------|----------------|------------|----------------------------|
| 1 | 703534 | 1 | DECAL, Controls |
| 2 | ----- | 1 | LABLE, Danger/Instructions |
| 3 | ----- | 1 | LABLE, Danger/Discharge |
| 4 | 84002373 | 1 | LABLE, Snapper |

Not For Reproduction

Deck Group

Note: Unless noted otherwise, use the standard torque specifications

Mfg. No: 12BVC3BD707



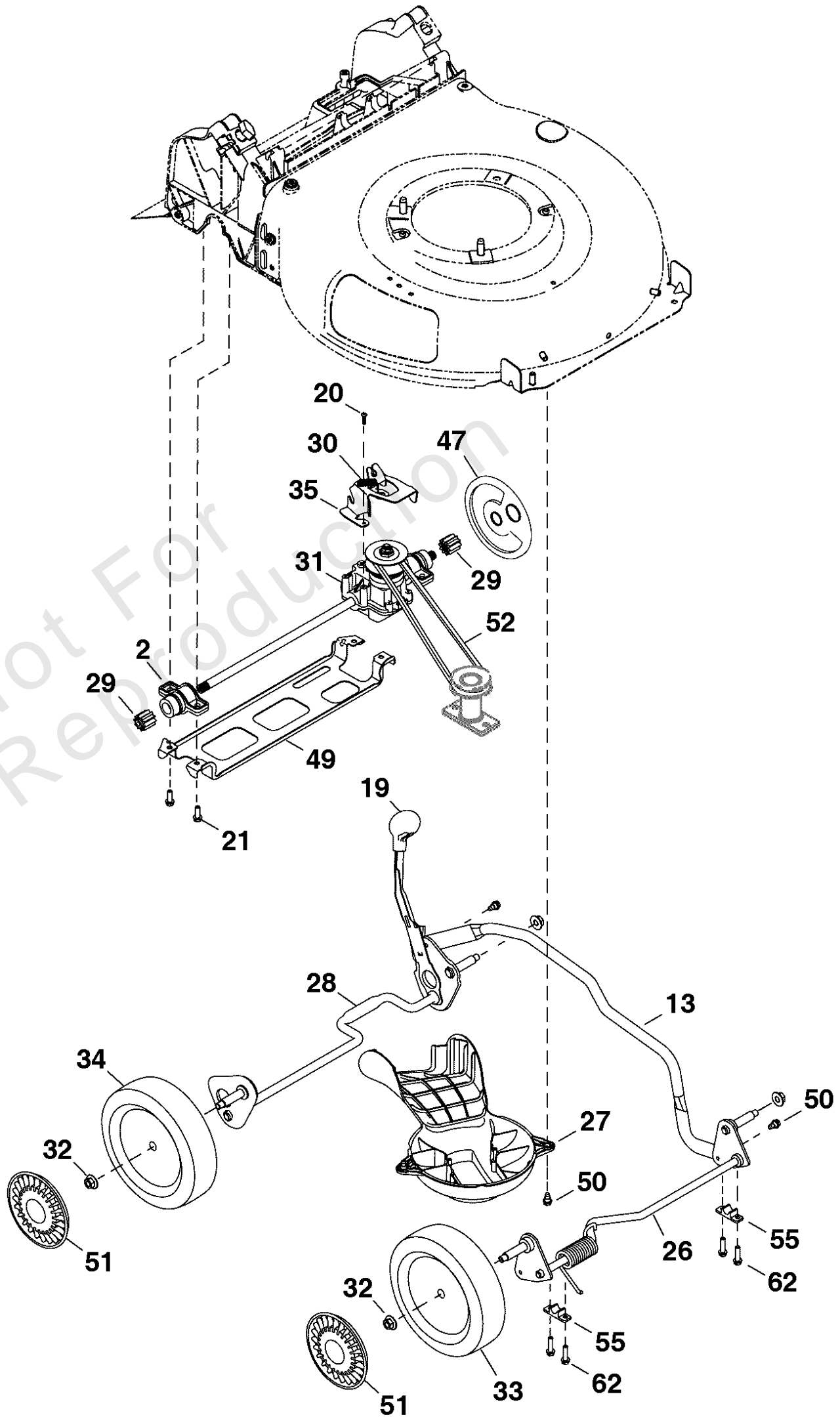
Deck Group

| REF NO | PART NO | QTY | DESCRIPTION |
|--------|---------------|-----|---|
| 1 | Not Servicing | 1 | DECK, 21" FWD Rear Discharge |
| 3 | 703482 | 9 | SCREW, 5/16-14 x 3/4 |
| 12 | 703499 | 1 | SHIELD, Trailing |
| 14 | 707951 | 1 | FRAME, Grass Bag |
| 15 | 703385 | 1 | BAG, Grass |
| 16 | 703472 | 1 | DOOR, Rear Discharge |
| 17 | 705878 | 1 | SPRING, Torsion, RH |
| 18 | 705879 | 1 | SPRING, Torsion, LH |
| 22 | 703509 | 1 | COVER, Front |
| 23 | 703507 | 1 | COVER, Transmission |
| 38 | 7091081SM | 1 | HWST, 1/4-15X3/4 BZ |
| 50 | 703714 | 1 | SCREW, Shoulder, 1/4-20 x 1/2 |
| 53 | 703557 | 1 | ADAPTER, Water Nozzle |
| 54 | 703502 | 1 | NOZZLE, Water |
| 56 | 703377 | 1 | CHUTE, Side Discharge |
| 57 | 707912 | 1 | MULCH PLUG |
| 58 | 703517 | 1 | SPRING, Torsion |
| 59 | 703529 | 1 | PIN, Hinge |
| 60 | 703538 | 1 | BRACKET, Chute Deflector |
| 61 | B4300GS | 1 | SCREW, Hex Washer Head, Taptite, 1/4-20 x 1/2 |

Drive Group

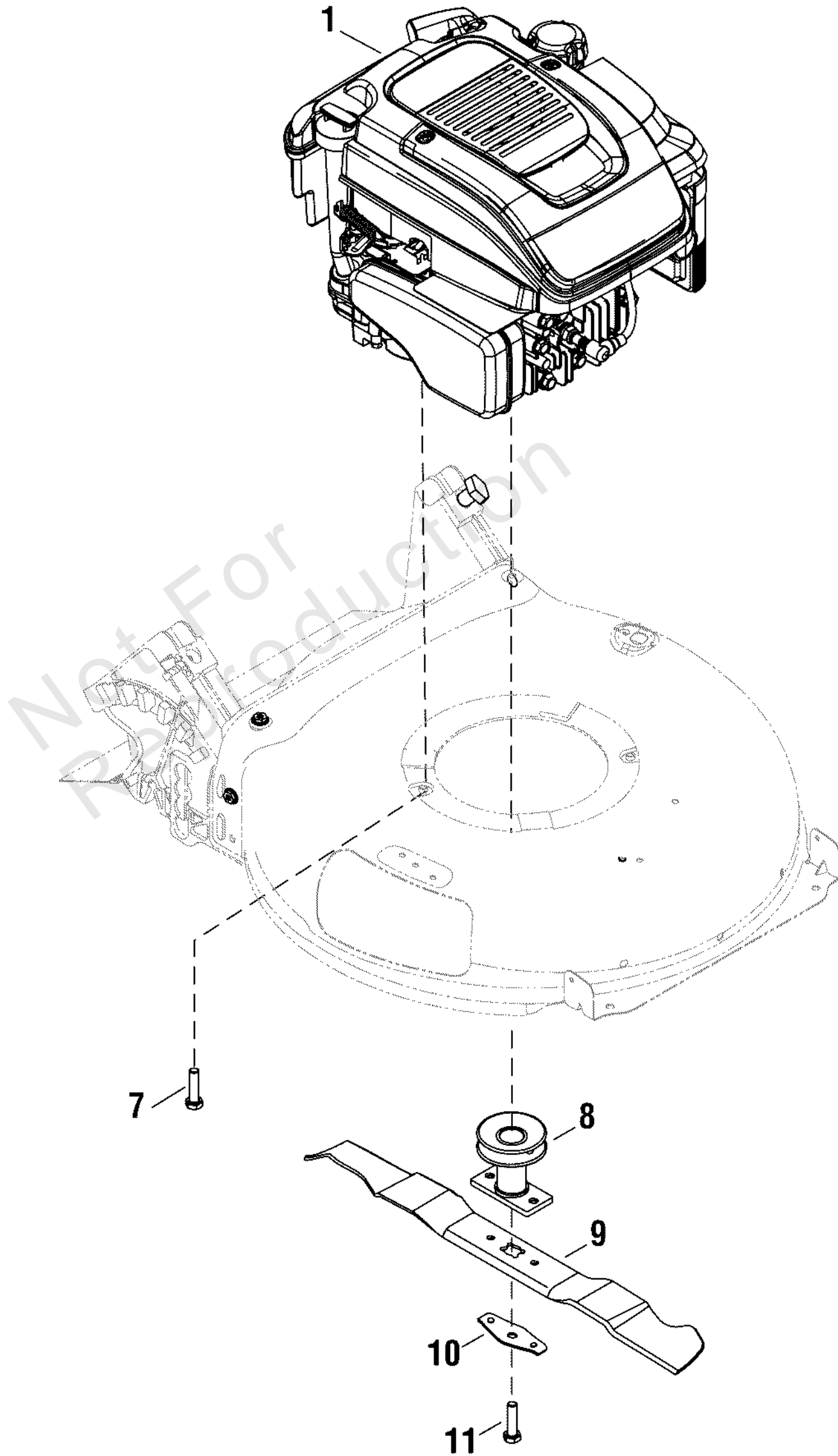
Note: Unless noted otherwise, use the standard torque specifications

Mfg. No: 12BVC3BD707



Drive Group

| REF NO | PART NO | QTY | DESCRIPTION |
|--------|-----------|-----|---|
| 2 | 703469 | 2 | ASSEMBLY, Bearing |
| 13 | 772010 | 1 | SCREW, #10-16 X 1.00 |
| 19 | 703488 | 1 | KNOB, Adjustment Lever |
| 20 | 703479 | 1 | SCREW, Hex Washer Head, .159 x .43 |
| 21 | 7900023SM | 4 | CAPSCREW, Hex Head Flange Taptite, 1/4-15 X 1-1/4 |
| 26 | 770510 | 1 | AXLE ASSEMBLY, Front |
| 27 | 703471 | 1 | BAFFLE, Engine |
| 28 | 703548 | 1 | AXLE ASSEMBLY, Rear |
| 29 | 703555 | 2 | GEAR, 10T |
| 30 | 703516 | 1 | SPRING, Extension, 2.405 |
| 31 | 707936 | 1 | ASSEMBLY-TRANSMISSION |
| 32 | 5025394SM | 4 | NUT, 3/8-16 HEX NYLOCK |
| 33 | 703380 | 2 | WHEEL, Front |
| 34 | 707906 | 2 | WHEEL-REAR |
| 35 | 703540 | 1 | BRACKET, Transmission |
| 47 | 703505 | 2 | DUST COVER, Wheel |
| 55 | 703524 | 2 | BUSHING, Bearing, Front Crossbar |
| 49 | 772009 | 1 | Rear Support Bracket |
| 50 | 703714 | 2 | SCREW, Shoulder, 1/4-20 x 1/2 |
| 51 | 707911 | 4 | HUBCAP, Front, 8" Grey |
| 52 | 703374 | 1 | V-BELT, 3L, 31.25" |
| 62 | 772010 | 4 | SCREW, #10-16 X 1.00 |



Engine Group

| REF NO | PART NO | QTY | DESCRIPTION |
|--------|----------------|-----|--|
| 1 | 111P02-0007-F1 | 1 | * ENGINE, Briggs & Stratton, Mod. 111P02-0007-F1 |
| 7 | 707904 | 3 | SCREW, Engine Mounting, 3/8-16 x 1 |
| 8 | 703475 | 1 | ASSEMBLY, Blade Adapter |
| 9 | 703371 | 1 | BLADE, Mulching |
| 10 | 703520 | 1 | SUPPORT, Blade Bell |
| 11 | 01X142MA | 1 | BOLT, Hex, 3/8-24 x 1-1/2 |

Not For
Reproduction

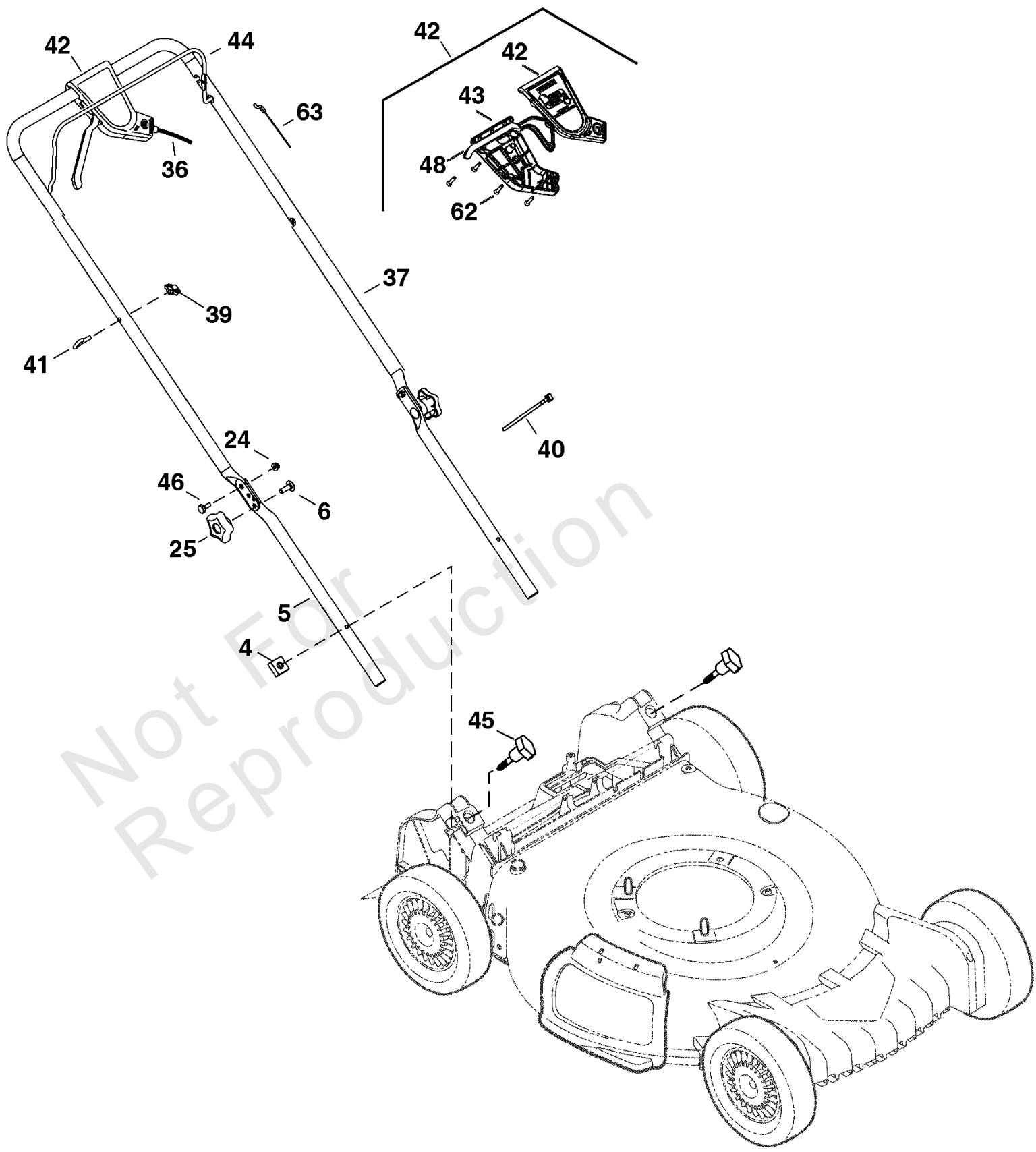
Footnotes:

NOTE: * Purchase engine & engine parts from engine service outlets.

Handle Group

Note: Unless noted otherwise, use the standard torque specifications

Mfg. No: 12BVC3BD707



Handle Group

| REF NO | PART NO | QTY | DESCRIPTION |
|--------|-----------|-----|---|
| 4 | 703486 | 2 | NUT, Square, 1/4-20 |
| 5 | 703530 | 1 | HANDLE, Lower |
| 6 | 703483 | 2 | BOLT,5/16-18X1.000,RO |
| 24 | 703463 | 2 | NUT, GR5,1/4-20 |
| 25 | 1101453MA | 2 | KNOB, Handle, 5/16-18 |
| 36 | 703563 | 1 | CABLE, Control, Variable Speed |
| 37 | 703531 | 1 | HANDLE, Upper, Adjustable |
| 39 | 1101222MA | 1 | KNOB, 1/4-20 |
| 40 | 1701011SM | 2 | TIE, Self Locking, 15" Long |
| 41 | 703485 | 1 | GUIDE, Rope |
| 42 | 703533 | 1 | ASSEMBLY, Control Lever |
| 43 | 772012 | 1 | Control Cover Lower -(Includes item #'s 43, 48 & 62) |
| 48 | 772013 | 1 | Engagement Lever |
| 62 | 772010 | 4 | SCREW, #10-16 X 1.00 |
| 44 | 772011 | 1 | Operator Bail Assembly |
| 45 | 707910 | 2 | NUT, Wing |
| 46 | 703522 | 2 | BOLT, Shoulder, 1/4-20 |
| 63 | 703561 | 1 | CABLE, OPC Engine Brake |

Hardware Identification & Torque Specifications

| Torque Specification Chart | | | | | | | | |
|--|-----------|------|-----------|------|------------|------|------------|------|
| FOR STANDARD METRIC MACHINE HARDWARE (Tolerance ± 20%) | | | | | | | | |
| Property Class | 5.6 | | 8.8 | | 10.9 | | 12.9 | |
| | Class 5.6 | | Class 8.8 | | Class 10.9 | | Class 12.9 | |
| Size Of Hardware | in/lbs | Nm. | in/lbs | Nm. | in/lbs | Nm. | in/lbs | Nm. |
| | ft/lbs | | ft/lbs | | ft/lbs | | ft/lbs | |
| M3 | 5.88 | .56 | 13.44 | 1.28 | 19.2 | 1.80 | 22.92 | 2.15 |
| M4 | 13.44 | 1.28 | 30.72 | 2.90 | 43.44 | 4.10 | 52.56 | 4.95 |
| M5 | 26.4 | 2.50 | 60.96 | 5.75 | 5.97 | 8.10 | 7.15 | 9.7 |
| M6 | 44.64 | 4.3 | 7.3 | 9.9 | 10.3 | 14 | 12.1 | 16.5 |
| M7 | 5.2 | 7.1 | 12.1 | 16.5 | 16.9 | 23 | 19.9 | 27 |
| M8 | 7.7 | 10.5 | 17.7 | 24 | 25 | 34 | 29 | 40 |
| M10 | 15 | 21 | 35 | 48 | 50 | 67 | 59 | 81 |
| M12 | 26 | 36 | 61 | 83 | 86.2 | 117 | 103 | 140 |
| M14 | 42 | 58 | 101 | 132 | 136 | 185 | 162 | 220 |
| M16 | 64 | 88 | 147 | 200 | 210 | 285 | 250 | 340 |
| M18 | 89 | 121 | 202 | 275 | 287 | 390 | 346 | 470 |
| M20 | 126 | 171 | 290 | 390 | 405 | 550 | 486 | 660 |
| M22 | 169 | 230 | 390 | 530 | 559 | 745 | 656 | 890 |
| M24 | 217 | 295 | 497 | 375 | 708 | 960 | 840 | 1140 |
| M27 | 320 | 435 | 733 | 995 | 1032 | 1400 | 1239 | 1680 |
| M30 | 435 | 590 | 995 | 1350 | 1401 | 1900 | 1681 | 2280 |
| M33 | 590 | 800 | 1349 | 1830 | 1902 | 2580 | 2278 | 3090 |
| M36 | 759 | 1030 | 1740 | 2360 | 2441 | 3310 | 2935 | 3980 |
| M39 | 988 | 1340 | 2249 | 3050 | 3163 | 4290 | 3798 | 5150 |

| Torque Specification Chart | | | | | | |
|---|-------------|-------|-------------|-------|-------------|---------|
| FOR STANDARD MACHINE HARDWARE (Tolerance ± 20%) | | | | | | |
| Hardware Grade | No Marks | | SAE Grade 5 | | SAE Grade 8 | |
| | SAE Grade 2 | | SAE Grade 5 | | SAE Grade 8 | |
| Size Of Hardware | in/lbs | Nm. | in/lbs | Nm. | in/lbs | Nm. |
| | ft/lbs | | ft/lbs | | ft/lbs | |
| 8-32 | 19 | 2.1 | 30 | 3.4 | 41 | 4.6 |
| 8-36 | 20 | 2.3 | 31 | 3.5 | 43 | 4.9 |
| 10-24 | 27 | 3.1 | 43 | 4.9 | 60 | 6.8 |
| 10-32 | 31 | 3.5 | 49 | 5.5 | 68 | 7.7 |
| 1/4-20 | 66 | 7.6 | 8 | 10.9 | 12 | 16.3 |
| 1/4-28 | 76 | 8.6 | 10 | 13.6 | 14 | 19.0 |
| 5/16-18 | 11 | 15.0 | 17 | 23.1 | 25 | 34.0 |
| 5/16-24 | 12 | 16.3 | 19 | 25.8 | 29 | 34.0 |
| 3/8-16 | 20 | 27.2 | 30 | 40.8 | 45 | 61.2 |
| 3/8-24 | 23 | 31.3 | 35 | 47.6 | 50 | 68.0 |
| 7/16-14 | 30 | 40.8 | 50 | 68.0 | 70 | 95.2 |
| 7/16-20 | 35 | 47.6 | 55 | 74.8 | 80 | 108.8 |
| 1/2-13 | 50 | 68.0 | 75 | 102.0 | 110 | 149.6 |
| 1/2-20 | 55 | 74.8 | 90 | 122.4 | 120 | 163.2 |
| 9/16-12 | 65 | 88.4 | 110 | 149.6 | 150 | 204.0 |
| 9/16-18 | 75 | 102.0 | 120 | 163.2 | 170 | 231.2 |
| 5/8-11 | 90 | 122.4 | 150 | 204.0 | 220 | 299.2 |
| 5/8-18 | 100 | 136 | 180 | 244.8 | 240 | 326.4 |
| 3/4-10 | 160 | 217.6 | 260 | 353.6 | 386 | 525.0 |
| 3/4-16 | 180 | 244.8 | 300 | 408.0 | 420 | 571.2 |
| 7/8-9 | 140 | 190.4 | 400 | 544.0 | 600 | 816.0 |
| 7/8-14 | 155 | 210.8 | 440 | 598.4 | 660 | 897.6 |
| 1-8 | 220 | 299.2 | 580 | 788.8 | 900 | 1,244.0 |
| 1-12 | 240 | 326.4 | 640 | 870.4 | 1,000 | 1,360.0 |

The guides and ruler furnished below are designed to help you select the appropriate hardware.



Nut, M8

Thread Diameter (mm)

Inside Diameter (in) Threads per inch

Nut, 1/2-16



Screw, M8- 1.25 x 25

Thread Diameter (mm) Distance between threads (mm) Body Length (mm)

Body Diameter Threads per inch Body Length (in)

Screw, 1/2- 16 x 2



Standard Hardware Sizing

When a washer or nut is identified as 1/2" (M8), this is the *Nominal size*, meaning the *inside diameter* is 1/2 inch (8mm metric thread diameter); if a second number is present it represents the *threads per inch* (distance between threads).

When bolt or capscrew is identified as 1/2 - 16 x 2" (M8 - 1.25 x 50), this means the *Nominal size*, or body diameter is 1/2 inch (8mm metric thread diameter), the second number, 16, represents the *threads per inch*, (*distance between threads*). The final number is the body length of the bolt or screw, 2 inches (50mm).

NOTES

- These torque values are to be used for all hardware excluding: locknuts, self-tapping screws, thread forming screws, sheet metal screws and socket head setscrews.
- Recommended seating torque values for locknuts:
 - for prevailing torque locknuts - use 65% of grade 5 torques.
 - for flange whizlock nuts and screws - use 135% of grade 5 torques.
- Unless otherwise noted on assembly drawings, all torque values must meet this specification.

Common Hardware Types

Hex Head Capscrew



Washer



Carriage Bolt



Hex Nut

Wrench & Fastener Size Guide

| | | | | |
|----------------------------------|----------------------------------|----------------------------------|--|---------------------------------|
| | | | | |
| 1/4" Bolt or Nut Wrench—7/16" | 5/16" Bolt or Nut Wrench—1/2" | 3/8" Bolt or Nut Wrench—9/16" | 7/16" Bolt or Nut Wrench (Bolt)—5/8" Wrench (Nut)—11/16" | 1/2" Bolt or Nut Wrench—3/4" |
| M6 Bolt or Nut Wrench—10mm | M8 Bolt or Nut Wrench—13mm | M10 Bolt or Nut Wrench—17mm | M12 Bolt or Nut Wrench—19mm | M14 Bolt or Nut Wrench—22mm |

